

eCentric™ Executive

Heavy Duty Series

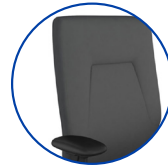
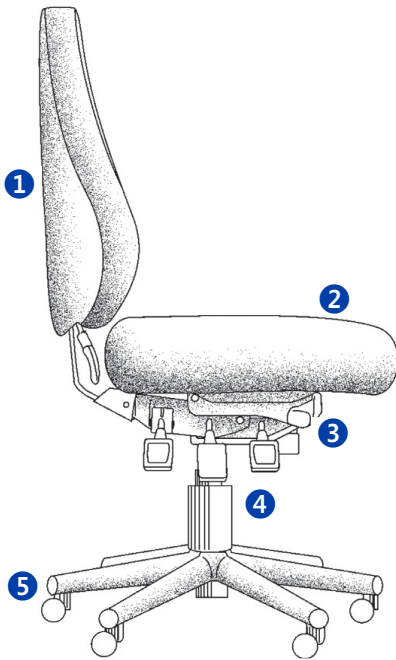


The eCentric Executive Heavy Duty chair is designed to provide exceptional cushioned comfort with the ergonomic support needed for a variety of office tasks. Versatile in its capabilities, the chair's durable design and pleasing aesthetic make it well suited for executive and management offices. The eCentric Executive Heavy Duty is specifically designed for heavier support requirements and is warranted up to 400 lbs.

ergoCentric®
The science of sitting®

eCentric™ Executive Heavy Duty Series

[View Online](#)



Heavy duty
back support



Dual curve
polyurethane foam



Plus Size
Multi Tilt mechanism



26" glass reinforced
nylon base

Features

- 1** Backrest
 - 5" patented back height adjustment system
 - Heavy duty back bar support
 - Molded polyurethane foam
 - 21" w x 26" h
- 2** Seat
 - Dual curve design is built into the hardwood to support the function of the molded dual density polyurethane foam over the long term.
 - Eight ply hardwood seat structure
 - Seat pan 24"w x 21"d
- 3** Plus Size Multi Tilt mechanism
 - Back angle adjustment
 - Adjustable spring tension
 - Forward tilt lock out
 - Infinite lock free float
 - 2 ½" Depth adjustable seat slider
- 4** Pneumatic lift
 - 100mm high pressure, high capacity cylinder
 - seat height adjustment between 18 ¾" -22 ¼"
- 5** Base and casters
 - 27" steel base
 - Bariatric heavy duty casters

[Contact Sales](#)

Options

- Fixed and adjustable arm options
- Seat size options:
 - Small (20"w x 17"d)
 - Small Heavy Duty (24"w x 19"d)
 - Plus Size (22"w x 21"d)
 - Extra Wide (22"w x 19"d)
- Patented adjustable headrest
- Air lumbar and air thoracic
- 30" diameter steel base

Warranty

Lifetime°

- Original purchaser
- Defects and functional failure of materials up to a weight of 400 lbs
- With the following exceptions:

5 years°

- Mechanisms, arms, foam, fabrics

° Includes labor costs.

