



A quick reference guide to ergoCentric® Seating Systems

EXCLUSIVELY FOR:

Ontario Public Service

Vendor of Record Arrangement

Agreement No.:

MGCS Tender-13685 – Office, Institutional
and Other Furniture

ergoCentric® 

Table of contents

2	Introduction to ergoCentric
5	Trial chair – getting it right the first time
6	How to use this guide
6	Upholstery options

Task chairs

8	tCentric Hybrid™
9	airCentric® 2
10	ecoCentric™ Mesh

24/7 shift/intensive task chairs

11	airCentric 2
12	24Centric®

Meeting room chair with casters

14	tCentric Hybrid
15	airCentric 2
16	ecoCentric Mesh

High stools

17	tCentric Hybrid
18	airCentric 2
19	Ergo 2F

20	Additional options
20	Armrest options
22	The ergoCentric advantage
23	Responsible manufacturing

Welcome to the quick reference guide to ergoCentric® Seating Systems

ergoCentric Seating Systems' mission is to design and manufacture the best ergonomic chairs in the world and we are recognized as North America's premier manufacturer of high-quality ergonomic seating for office, specialty and healthcare environments. We are proud to have been selected by the Province of Ontario as a Vendor of Record (VOR) for Office, Institutional and Other Furniture.

A solution that improves the lead-time

ergoCentric's build-to-order modular manufacturing system allows us to fit every person with the perfect chair. We are able to make thousands of different chairs with our always-in-stock inventory of modular components and we even modify specific components as required. And because we always have thousands of components in-stock, ergoCentric is able to quickly and cost effectively assemble and ship personalized seating anywhere in Ontario within 10 business days.

What does a "modular seating system" really mean?

A modular approach to manufacturing means we divide each chair into its core parts, then manufacture each chair only upon receipt of the purchase order. Based on the inventory of components we hold, we are able to configure thousands of different seating systems because all components are interchangeable with all other parts across all series of chairs we have ever made. With many backrest styles, 6 seat sizes, multiple arm types, 6 base types and 5 gas lift types, the number of different task chairs ergoCentric can supply is almost unlimited and allows us to fit virtually 100% of the workforce.

We're here to help

We strive to maintain complete customer satisfaction and to accomplish this we aim to develop useful tools, such as this Quick Reference Guide to ergoCentric Seating Systems, to help everyone who selects and uses our products.

ergoCentric.com, contains many updated tools to keep you fully informed about our product details, adjustment videos, fabric selections and much more.

Our Inside Sales team (toll-free 1 866 GET ERGO or ops@ergocentric.com) are available Monday through Friday to assist you. If you have any questions about navigating this book, or what ergoCentric series fits your environment the best, please contact us.

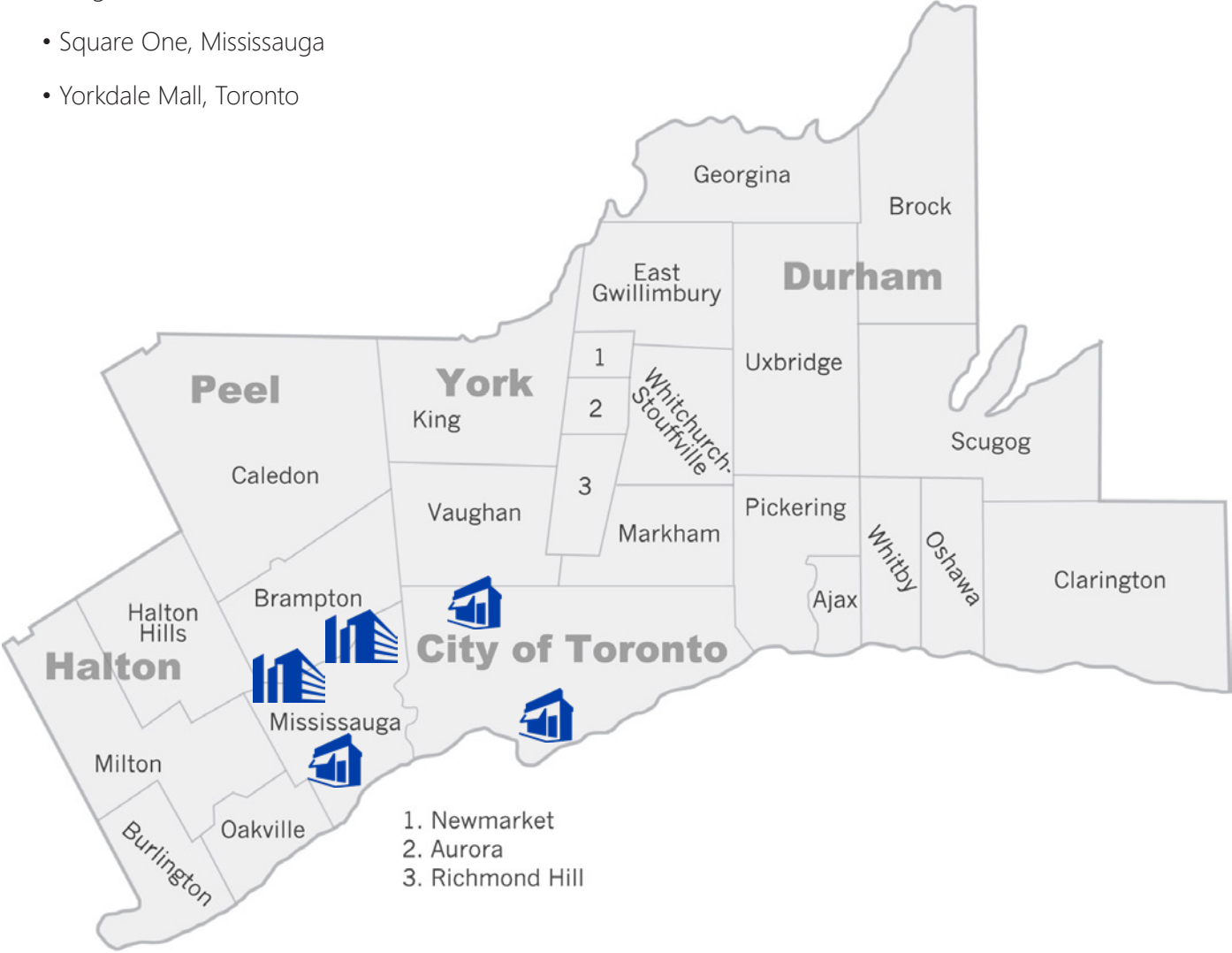
ergoCentric® is a local manufacturer in the Greater Toronto Area

2 manufacturing facilities

- 48,000 sq. ft. in Mississauga, ON
- 46,000 sq. ft. in Mississauga, ON

3 showroom&stores

- King Edward Hotel, Downtown Toronto
- Square One, Mississauga
- Yorkdale Mall, Toronto



Delivery standards

Delivery standards represent the expected transit time in business days from the day we receive the order to the delivery of items. Standard delivery anywhere in Ontario is 10-15 business days. A business day is a day other than Saturday, Sunday and statutory holidays.

Dedicated partner portal for Ontario Public Sector

Conveniently place orders online with our dedicated partners portal: <https://portal.ca.ergocentric.com>

*Orders placed through the online portal are capped at a total value of \$ 4,999.99. Purchase by credit card only (no POs).

Placing an order

Have questions or need to set up an account? Contact us today!

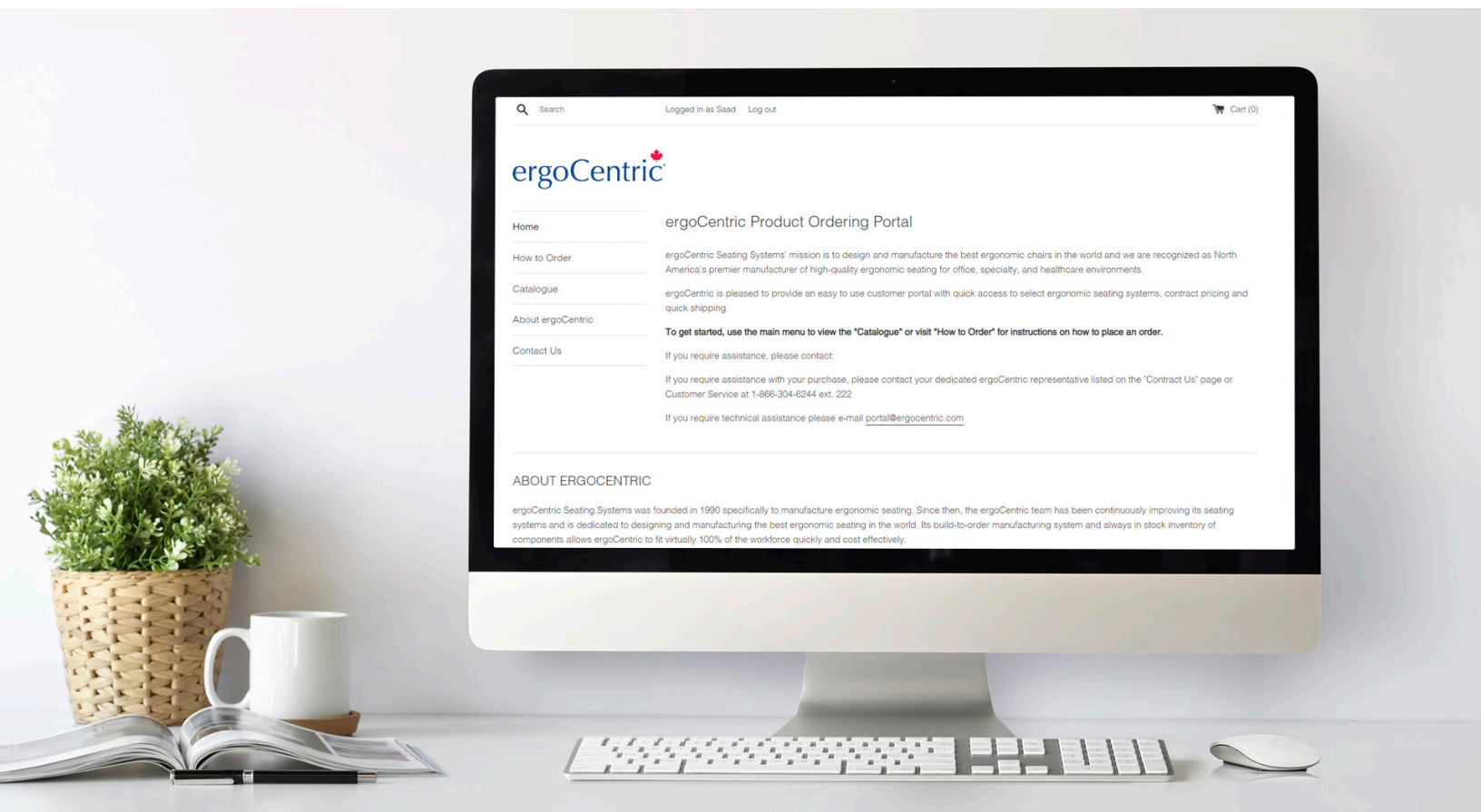
email: ops@ergocentric.com phone: 905 696-6800

To order products outside of this catalogue, contact:

Sean Storozuk

email: sean.storozuk@ergocentric.com

mobile: 416 528-8078



Trial chair – getting it right the first time

ergoCentric's trial chair program allows for selection of seating at no additional cost. Trial chairs can be ordered with required options and adjustable features that meet the specific requirements of employees and/or their work environment.

Trial chairs may be sampled for 10 days.

How the trial chair program works

- ergoCentric's trial program starts with the Trial Chair Order Form available on the Vendor of Record User Guide, MGCS Tender-13685 – Office, Institutional and Other Furniture. This order form includes questions which assist us in providing the optimal seating solution.
- An ergoCentric Sales Representative or a Representative from our extensive dealer network across the province are available to provide instruction on adjusting the chair controls with the End User. These instructional sessions are arranged by your ergoCentric Representative with the delivery of the trial chair.
- If the solution provided is not optimal, your local Sales Representative will quickly review the outstanding issues and switch out components on site (because of the modular nature of our seating systems).
- Once the demo period is complete, a dedicated Inside Sales Representative will immediately arrange for pick-up and the demo chair will be picked up within 3 business days at no cost.

Since we are successful 100% of the time at providing the optimal seating solution, this program is cost effective for the Client as complaints are satisfied and healthcare issues are resolved and/or avoided.



tCentric Hybrid™

How to use this reference guide

This Quick Reference to ergoCentric Seating Systems has been developed specifically for the Ontario Public Service, aiming to make it as easy as possible for you to find what you are looking for.

- A** This guide is divided into several sections, each seating category is highlighted in grey at the top of each page, allowing you to quickly find the type of chair you require.
- B** Pricing (based on Grade 1 fabrics) is provided on each page.
Customer's Own Material (COM) are accepted, allowing you to tailor ergoCentric seating products for a customized look. If utilizing a COM, please contact Inside Sales.
- C** ergoCentric has many optional features available. Optional features such as triple density foam are included on each page when applicable. In addition to these, you can find more options such as different seat sizes on [page 20](#).

Still not finding what you need?

Get in touch with your area Sales Representative or Inside Sales at ops@ergocentric.com

Upholstery options

ergoCentric offers a variety of fabrics that are highly durable and meet heavy duty abrasion rub tests.

Open House



Asteroid
2053



Coffee Bean
2083



Graphite
2079



Midnight
2025



Onyx
2016

Punch Card



Abyss
1313



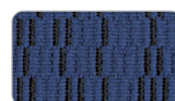
Burgundy
1311



Carbon
1302



Crimson
1307



Navy
1309

Nymatrix™

With office optimization strategies such as co-working and hybrid workplace environments, it is important to be mindful of implementing effective cleaning tactics. In the case of the office chair, it is especially important to keep contact surfaces such as armrests, seats and adjusting levers clean and virus-free.

Nymatrix is ideal when comfort, ergonomics and hygiene is important.

Created by adding ergoCentric's proprietary anti-slip technology to an engineered nylon matrix fabric, Nymatrix:

- Is easy to clean with soap and water or disinfected with 5% bleach solution
- Breathes like leather
- Prevents you from sliding forward ensuring proper back and lumbar support

You can be assured that Nymatrix will stand up to the wear and tear of the regular cleaning and disinfecting protocols of the hybrid office model.

Suggested applications include corporate and home offices, call centres and hospital administration areas.

Have a project or seating requirement that could benefit from the ergonomic and cleanable properties of Nymatrix? Contact your area Sales Representative or email ops@ergocentric.com for more information and pricing.



Navy



Dark Grey



Light Grey



Red



Black

tCentric Hybrid™

Ideal for office work and accommodations

The tCentric Hybrid combines the best attributes of the leading mesh chair with the industry leading benefits of ergoCentric's fully ergonomic upholstered chairs. You no longer have to choose between the breathability of a mesh chair and great ergonomics.



Specifications

Backrest

- 5" patented back height adjustment system
- tCentric lumbar support (12"w x 6"h)
- Dual curve mesh backrest (19"w x 25"h)

Seat

- Dual density molded polyurethane foam
- Seat pan (20"w x 19"d)

Multi Tilt mechanism

- Infinite lock free float
- Back angle adjustment
- Adjustable spring tension
- Infinite forward tilt lock out
- 2 ½" depth adjustable seat slider

Pneumatic lift (seat height)

- 125mmLT (15 ¾"-20 ¼")

Base

- 26" glass reinforced nylon high profile base
- 5 dual wheel nylon casters 2 (for carpets)

Armrests (full specifications on page 20)

- Cushioned finger tip adjustment
- Proprietary swivel adjustment rotates 360°
 - » When rotated 180° the forearm pad moves 2" forward
- Arms width adjustable 2" per arm
- Arm height adjustable from seat pan 5 ¾"-9 ¾"
- Arm pad: Polyurethane arm pad 5"w x 10"l

[Order online now](#)



PRODUCT CODE	PRICE PER UNIT
T-MT-TLS-TC360	\$ 575.52

OPTIONS (additional seat, armrest and pneumatic lift options on page 20)

airCentric® 2



Ideal for office work and accommodations

All the benefits of airflow and the proven ergonomic support of a foam and fabric offering, now with improved comfort and appearance. The airCentric 2 combines a sophisticated aesthetic with modular design, full adjustability and airflow comfort.

Specifications

- Backrest:**
- 5" patented back height adjustment system
 - Proprietary airflow molded polyurethane foam
 - Front upholstered dual curve backrest (19"w x 24"h)
- Seat**
- Dual density molded polyurethane foam
 - Seat pan (20"w x 19"d)
- Multi Tilt mechanism**
- Infinite lock free float
 - Back angle adjustment
 - Adjustable spring tension
 - Infinite forward tilt lock out
 - 2 ½" depth adjustable seat slider
- Pneumatic lift (seat height)**
- 125mmLT (15 ¾"-20 ¼")
- Base**
- 26" glass reinforced nylon high profile base
 - 5 dual wheel nylon casters 2 (for carpets)
- Armrests (full specifications on page 20)**
- Finger tip adjustment
 - Proprietary swivel adjustment rotates 360°
 - » When rotated 180° the forearm pad moves 3" forward
 - Arms width adjustable 2" per arm
 - Arm height adjustable from seat pan 6 ¾"-9 ¾"
 - Arm pad: Oval tube polyurethane arm pad 4 ¼"w x 10 ⅝"l

[Order online now](#)



PRODUCT CODE		PRICE PER UNIT	
AIR2-MT-3SWVOT		\$ 514.80	
OPTIONS (additional seat, armrest and pneumatic lift options on page 20)			
Air lumbar support (AL)	+ \$57.75	Height, lateral & swivel adjustable (TCL360)	+ \$ 65.67
Adjustable headrest (AHR)	+ \$142.89	Height & swivel adjustable (TC360)	+ \$ 53.46
Triple density foam (TDF)	+ \$23.10		

ecoCentric™ Mesh

Ideal for offices

The ecoCentric Mesh features a high quality mesh seat for all day cool comfort and support. 4" of lumbar adjustment makes it ideal for shared work environments.



Specifications

Backrest

- 4" of adjustable lumbar support
- Breathable double mesh backrest (19 ¼" w x 23" h)

Seat

- Seat pan (20" w x 19" d)

Multi Tilt mechanism

- Infinite lock free float
- Back angle adjustment
- Adjustable spring tension
- Infinite forward tilt lock out
- 2 ½" depth adjustable seat slider

Pneumatic lift (seat height)

- 125mm (17 ¼"-21 ¾")

Base

- 26" glass reinforced nylon high profile base
- 5 dual wheel nylon casters 2 (for carpets)

Armrests (full specifications on page 20)

- Finger tip adjustment
- Proprietary swivel adjustment rotates 360°
 - » When rotated 180° the forearm pad moves 3" forward
- Arms width adjustable 2" per arm
- Arm height adjustable from seat pan 6 ¾"-9 ¾"
- Arm pad: Oval tube polyurethane arm pad 4 ¼" w x 10 ⅝" l

[Order online now](#)



PRODUCT CODE	PRICE PER UNIT
ECO-MESH-MT-SAFMT-SSLF-3SWVOT	\$356.79
OPTIONS (additional seat, armrest and pneumatic lift options on page 20)	

airCentric® 2



Ideal for 24 hour use

All the benefits of airflow and the proven ergonomic support of a foam and fabric offering, now with improved comfort and appearance. The airCentric 2 combines a sophisticated aesthetic with modular design, full adjustability and airflow comfort.

Specifications

Backrest:

- 5" patented back height adjustment system
- Proprietary airflow molded polyurethane foam
- Front upholstered dual curve backrest (19"w x 24"h)

Seat

- Dual density molded polyurethane foam
- Seat pan (20"w x 19"d)

24 Hour Multi Tilt mechanism (up to 300 lbs)

- Infinite lock free float
- Back angle adjustment
- Adjustable spring tension
- Forward tilt lock out
- 2 ½" depth adjustable seat slider

Pneumatic lift (seat height)

- 125mmLT (18"-23")

Base

- 26" glass reinforced nylon high profile base
- 5 dual wheel nylon casters 2 (for carpets)

Armrests (full specifications on page 20)

- Finger tip adjustment
- Arms width adjustable 2" per arm
- Arm height adjustable from seat pan 6"-9"
- Arm pad: Oval tube polyurethane arm pad 4 ¼"w x 10 ⅝"l

[Order online now](#)



PRODUCT CODE	PRICE PER UNIT
AIR2-24MT-3ATAOT	\$ 540.21
OPTIONS (additional seat, armrest and pneumatic lift options on page 20)	

24Centric™



For 24 hour use

Versatile in its capabilities, the 24Centric's durable design and pleasing aesthetic make the chair well suited for control room use and any other 24 hour environments.

Specifications

Backrest

- 5" patented back height adjustment system
- Bolstered fabricated polyurethane foam
- Fully upholstered dual curved backrest (21"w x 26"h)

Seat

- Dual density molded polyurethane foam
- Seat pan (20"w x 19"d)

24 Hour Multi Tilt mechanism (up to 300 lbs)

- Infinite lock free float
- Back angle adjustment
- Adjustable spring tension
- Forward tilt lock out
- 2 ½" depth adjustable seat slider

Pneumatic lift (seat height)

- 125mm (17 ½"-23 ½")

Base

- 27" Hercules glass reinforced nylon base
- 5 dual wheel nylon casters 2 (for carpets)

Armrests (full specifications on page 20)

- Finger tip adjustment
- Proprietary swivel adjustment rotates 360°
 - » When rotated 180° the forearm pad moves 3" forward
- Arms width adjustable 2" per arm
- Arm height adjustable from seat pan 6 ¾"-9 ¾"
- Arm pad: Oval tube polyurethane arm pad 4 ¼"w x 10 ⅝"l

[Email order request](#)



PRODUCT CODE		PRICE PER UNIT	
24C-24MT-3SWVOT		\$ 765.93	
OPTIONS (additional seat, armrest and pneumatic lift options on page 20)			
Air lumbar support (AL)	+ \$ 57.75	Height, lateral & swivel adjustable (TCL360)	+ \$ 65.67
Adjustable headrest (AHR)	+ \$ 142.89	Height & swivel adjustable (TC360)	+ \$ 53.46
Triple density foam (TDF)	+ \$ 23.10		



tCentric Hybrid™

Ideal for boardrooms

The tCentric Hybrid combines the best attributes of the leading mesh chair with the industry leading benefits of ergoCentric's fully ergonomic upholstered chairs. You no longer have to choose between the breathability of a mesh chair and great ergonomics.



Specifications

Backrest

- 5" patented back height adjustment system
- Dual curve mesh backrest (19"w x 25"h)

Seat

- Dual density molded polyurethane foam
- Seat pan (20"w x 19"d)

Boardroom mechanism

- Single lock free float
- Seat height adjustment
- Adjustable spring tension

Pneumatic lift (seat height)

- 125mm (16"-20 1/2")

Base

- 26" glass reinforced nylon high profile base
- 5 dual wheel nylon casters 2 (for carpets)

Armrests *(full specifications on page 20)*

- Height adjustable
- Cushioned finger tip adjustment
- Arms width adjustable 2" per arm
- Arm height adjustable from seat pan 5 3/4"-9 3/4"
- Arm pad: Polyurethane arm pad 5"w x 10"l

[Email order request](#)



PRODUCT CODE	PRICE PER UNIT
T-BR-TC	\$ 424.38
OPTIONS <i>(additional seat, armrest and pneumatic lift options on page 20)</i>	

airCentric® 2



Ideal for boardrooms

All the benefits of airflow and the proven ergonomic support of a foam and fabric offering, now with improved comfort and appearance. The airCentric 2 combines a sophisticated aesthetic with modular design, full adjustability and airflow comfort.

Specifications

- Backrest:
 - 5" patented back height adjustment system
 - Proprietary airflow molded polyurethane foam
 - Front upholstered dual curve backrest (19"w x 24"h)
- Seat
 - Dual density molded polyurethane foam
 - Seat pan (20"w x 19"d)
- Boardroom mechanism
 - Single lock free float
 - Seat height adjustment
 - Adjustable spring tension
- Pneumatic lift (seat height)
 - 125mm (16"-20 1/2")
- Base
 - 26" glass reinforced nylon high profile base
 - 5 dual wheel nylon casters (for carpets)
- Armrests *(full specifications on page 20)*
 - Finger tip adjustment
 - Arms width adjustable 2" per arm
 - Arm height adjustable from seat pan 6"-9"
 - Arm pad: Oval tube polyurethane arm pad 4 1/4"w x 10 5/8"l

[Email order request](#)



PRODUCT CODE		PRICE PER UNIT	
AIR2-BR-3ATAOT		\$ 395.34	
OPTIONS <i>(additional seat, armrest and pneumatic lift options on page 20)</i>			
Air lumbar support (AL)	+ \$ 41.25	Triple density foam (TDF)	+ \$ 23.10
Adjustable headrest (AHR)	+ \$ 142.89	Fixed arms (BRAR)	- \$ 23.76

ecoCentric™ Mesh



Ideal for boardrooms

The ecoCentric Mesh features a high quality mesh seat for all day cool comfort and support. 4" of infinite lumbar adjustment makes it ideal for shared work environments.

Specifications

Backrest

- 4" of adjustable lumbar support
- Breathable double mesh backrest (19 ¼"w x 23"h)

Seat

- Seat pan (20"w x 19"d)

Boardroom mechanism

- Single lock free float
- Seat height adjustment
- Adjustable spring tension

Pneumatic lift (seat height)

- 125mm (16 ¼"-20 ¾")

Base

- 26" glass reinforced nylon high profile base
- 5 dual wheel nylon casters (for carpets)

Armrests *(full specifications on page 20)*

- Finger tip adjustment
- Arms width adjustable 2" per arm
- Arm height adjustable from seat pan 6"-9"
- Arm pad: Oval tube polyurethane arm pad 4 ¼"w x 10 ⅝"l

[Email order request](#)



PRODUCT CODE		PRICE PER UNIT	
ECO-MESH-BR-3ATAOT		\$ 365.97	
OPTIONS <i>(additional seat, armrest and pneumatic lift options on page 20)</i>			
Adjustable headrest (AHR)	+ \$ 142.89	Triple density foam (TDF)	+ \$ 23.10

tCentric Hybrid™



Ideal for drafting and customer service

The tCentric Hybrid combines the best attributes of the leading mesh chair with the industry leading benefits of ergoCentric's fully ergonomic upholstered chairs. You no longer have to choose between the breathability of a mesh chair and great ergonomics.

Specifications

- Backrest
 - 5" patented back height adjustment system
 - tCentric lumbar support (12"w x 6"h)
 - Dual curve mesh backrest (19"w x 25"h)
- Seat
 - Dual density molded polyurethane foam
 - Seat pan (20"w x 19"d)
- Counter Height mechanism
 - Independent back angle adjustment
 - Adjustable seat height
 - 2 ½" seat slider
- Pneumatic lift (seat height)
 - 200mm (23"-29 ½")
- Base
 - 26" glass reinforced nylon mid-profile base
 - 20" diameter aluminum, height adjustable footring
 - 2 ¼" glides
- Armrests (*full specifications on page 20*)
 - Height adjustable
 - Cushioned finger tip adjustment
 - Arms width adjustable 2" per arm
 - Arm height adjustable from seat pan 5 ¾"–9 ¾"
 - Arm pad: Polyurethane arm pad 5"w x 10"l

[Email order request](#)



PRODUCT CODE	PRICE PER UNIT
T-CH-TLS-SSLF-TC	\$ 570.90
OPTIONS (<i>additional seat, armrest and pneumatic lift options on page 20</i>)	

airCentric® 2



Ideal for drafting and customer service

All the benefits of airflow and the proven ergonomic support of a foam and fabric offering, now with improved comfort and appearance. The airCentric 2 combines a sophisticated aesthetic with modular design, full adjustability and airflow comfort.

Specifications

- Backrest:
 - 5" patented back height adjustment system
 - Proprietary airflow molded polyurethane foam
 - Front upholstered dual curve backrest (19"w x 24"h)
- Seat
 - Dual density molded polyurethane foam
 - Seat pan (20"w x 19"d)
- Counter Height mechanism
 - Independent back angle adjustment
 - Adjustable seat height
 - 2 ½" seat slider
- Pneumatic lift (seat height)
 - 200mm (23"-29 ½")
- Base
 - 26" glass reinforced nylon mid-profile base
 - 20" diameter aluminum, height adjustable footring
 - 2 ¼" glides
- Armrests (*full specifications on page 20*)
 - Finger tip adjustment
 - Arms width adjustable 2" per arm
 - Arm height adjustable from seat pan 6"-9"
 - Arm pad: Oval tube polyurethane arm pad 4 ¼"w x 10 ⅝"l

[Email order request](#)



PRODUCT CODE	PRICE PER UNIT
AIR2-CH-SSLF-3ATAOT	\$ 520.41
OPTIONS (<i>additional seat, armrest and pneumatic lift options on page 20</i>)	

Ergo 2F



Ideal for laboratory environments

The Ergo 2F series supports the tasks required at raised workstations while increasing comfort, health, and productivity.

Specifications

- Backrest**
 - Fully upholstered dual curve backrest (17"w x 19"h)
- Seat**
 - Dual density molded polyurethane foam
 - Seat pan (20"w x 19"d)
 - 2 ½" seat slider
- Tilt 2 mechanism**
 - Back height adjustment
 - Back angle adjustment
 - Seat tilt
- Pneumatic lift (seat height)**
 - 200mm (20 ½"-27 ½")
- Base**
 - 26" glass reinforced nylon mid-profile base
 - 20" diameter aluminum, height adjustable footring
 - 2 ¼" glides
- Armrests (full specifications on page 20)**
 - Finger tip adjustment
 - Arms width adjustable 2" per arm
 - Arm height adjustable from seat pan 6"-9"
 - Arm pad: Oval tube polyurethane arm pad 4 ¼"w x 10 ⅝"l

[Email order request](#)



PRODUCT CODE	PRICE PER UNIT
ERGO 2F 200 TILT FR-SSLF-3ATAOT	\$ 364.28
OPTIONS (additional seat, armrest and pneumatic lift options on page 20)	

Additional options

Standard seat – All task chairs come with a standard seat 20"w x 19"d unless otherwise specified.


The following can be added to chairs on the previous pages by adding the option's code to the chair's code.

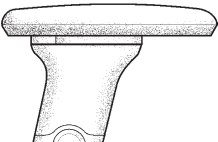
SEAT PAN OPTIONS (CODE)	PRICE PER UNIT
Extra small – 17 ½"w x 15 ½"d (XSS)	+ \$ 28.05
Small – 18 ½"w x 17"d (SS)	N/C
Standard – 20"w x 19"d (LS)	N/C
Plus size – 22"w x 19"d (PS)	+ \$ 28.05
Extra long – 20"w x 21"d (XLS)	+ \$ 28.05
CASTER OPTIONS (CODE)	PRICE PER UNIT
Dual wheel urethane casters 2 (UC2)	+ \$ 16.50
Single wheel nylon casters (SW)	+ \$ 25.08
Single wheel urethane casters (SWU)	+ \$ 28.05

Armrest options

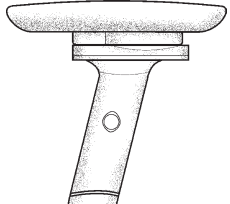
Let us help you choose the armrest that's right for you.

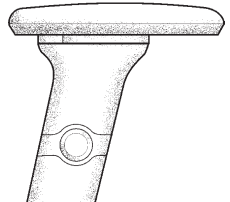
Height adjustable

3ATAOT – 3" HEIGHT ADJUSTABLE	CODE
 <ul style="list-style-type: none"> • Finger tip adjustment • Solid ¼" thick spring steel frame, epoxy powder coated black • Arms width adjustable 2" per arm • Arm height adjustable from seat pan (6"-9") • Arm pad: TCAP Polyurethane arm pad (4 ¼"w x 10 ⅝"l) 	3ATAOT

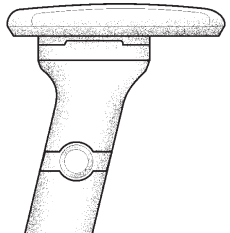
TC – 4" HEIGHT ADJUSTABLE	CODE
 <ul style="list-style-type: none"> • Cushioned finger tip adjustment • Solid ¼" thick spring steel frame, epoxy powder coated black • Arms width adjustable 2" per arm • Arm height adjustable from seat pan (5 ¾"-9 ¾") • Arm pad: Polyurethane arm pad (5"w x 10"l) 	TC

Height & swivel adjustable

3SWVOT – 3" HEIGHT & 360° SWIVEL ADJUSTABLE	CODE
 <ul style="list-style-type: none"> • Finger tip adjustment • Proprietary swivel adjustment rotates 360° <ul style="list-style-type: none"> » When rotated 180° the forearm pad moves 3" forward • Solid ¼" thick spring steel frame, epoxy powder coated black • Arms width adjustable 2" per arm • Arm height adjustable from seat pan (6 ¾"-9 ¾") • Arm pad: Oval tube polyurethane arm pad (4 ¼"w x 10 ⅝"l) 	3SWVOT

TC360 – 4" HEIGHT & 360° SWIVEL ADJUSTABLE	CODE
 <ul style="list-style-type: none"> • Cushioned finger tip adjustment • Proprietary swivel adjustment rotates 360° <ul style="list-style-type: none"> » When rotated 180° the forearm pad moves 2" forward • Solid ¼" thick spring steel frame, epoxy powder coated black • Arms width adjustable 2" per arm • Arm height adjustable from seat pan (5 ¾"-9 ¾") • Arm pad: Polyurethane arm pad (5"w x 10"l) 	TC360

Height, lateral & swivel adjustable

TCL360 – 4" HEIGHT, LATERAL & 360° SWIVEL ADJUSTABLE	CODE
 <ul style="list-style-type: none"> • Cushioned finger tip adjustment • Proprietary swivel adjustment rotates 360° <ul style="list-style-type: none"> » When rotated 180° the forearm pad moves 2" forward • Arm lateral adjustment 2 ½" inward • Solid ¼" thick spring steel frame, epoxy powder coated black • Arms width adjustable 2" per arm • Arm height adjustable from seat pan (6 ½"-10 ½") • Arm pad: Polyurethane arm pad (4 ¾"w x 10 ¼"l) 	TCL360

The ergoCentric® advantage

Unique serial number system

Every ergoCentric chair has its own serial number affixed under the seat and that number is entered into our database, noting the specifications of the chair, as well as any customizations. This system allows you to easily manage your facility, and makes reordering chairs and parts simple, while allowing us to quickly attend to any required warranty work.

ergoCentric®

1 866-438-3746



20039020010

Warranty

Lifetime*

- ergoCentric® warrants all of its office seating products against defects and functional failure of materials, for as long as the chair is in use by the original purchaser

tCentric Hybrid™ and airCentric® 2*

- 12 years / 3 shifts
- Our warranty covers everything – including tCentric Hybrid mesh, casters, pneumatic cylinder, arms, foam and the Synchro Glide and Multi Tilt mechanisms for up to a weight of 350 lbs.

ecoCentric™ Mesh and ergo 2F*

- 10 years
- Our warranty covers everything – including casters, pneumatic cylinder, arms, foam and all moving mechanisms

ergoCentric approved fabrics*

- 10 years

Warranty claims can be made directly to ops@ergo-centric.com

*Includes labour costs

ergoCentric is a proud sponsor of



Association of Canadian Ergonomists
Association Canadienne d'Ergonomie

Committed to quality designs and environmental protection

Responsible manufacturing

ergoCentric has received GREENGUARD® certification for indoor air quality for our chair series, the most stringent emissions criteria for office furniture products. ergoCentric’s commitment to environmental protection is a natural product of our concerns for workplace health and safety. As a result, we have earned the ISO 14001 international standard for environmental management systems.

ergoCentric has also achieved the BIFMA e3 Furniture Sustainability Standard. e3 considers how sustainable a product is from multiple perspectives, including the company’s social actions, energy usage, material selection and human and ecosystem impacts.

Quality assurance

All ergoCentric seating is tested to meet or surpass North American quality standards and we are ISO 9001 certified.





ergoCentric Inc.
275 Superior Blvd.
Mississauga ON L5T 2L6
Canada

ergoCentric®, tCentric Hybrid™, airCentric®, upCentric®, ecoCentric™, 24Centric™ and Nymatrix™ are registered trademarks of ergoCentric Inc.
All other trademarks, registered trademarks and logos are the property of their respective owners.

09/19/2022 v15-CA