



# Arm Options

---

Arm supports help stabilize the upper body thereby reducing the negative static muscle activity and assist in getting in and out of the chair. Arms that adjust in and out as well as up and down help ensure the weight of your arms are comfortably positioned and reduce stress on your neck and shoulders.

ergoCentric® has a full line of arms and arm caps; offering over 50 modular versions available on every chair. The arms and/or arm caps can be easily and inexpensively reconfigured to accommodate changes in job functions, employee and physical needs.

Adjustable arm options have two inches of width adjustment and up to four and a half inches of arm height adjustment for multiple user requirements.

**ergoCentric®**  
The science of sitting®

# Table of Contents

tCentric Armrest . . . . .	1
Height, Lateral & Swivel Adjustable Arms . . . . .	4
Height & Swivel Adjustable Arms . . . . .	5
Height & Lateral Adjustable Arms . . . . .	7
Height Adjustable Arms . . . . .	8
Fixed Arms . . . . .	9
Swing Away, Height & Swivel Adjustable Arms - tCentric Armpad . . . . .	10
Swing Away, Height Adjustable Arms - OT Armpad . . . . .	12
Swing Away, Height & Swivel Adjustable Arms - Oval Armpad . . . . .	13
tCentric Arm Pad Options . . . . .	14
Arm Pad Options . . . . .	15



## tCentric Armrest

Designed from top to bottom by ergoCentric®, the tCentric armrest provides unparalleled support.

The patent-pending tCentric armrest is silent, smooth gliding and available in four combinations of vertical, lateral and patented 360° swivel adjustments, ensuring the ability to maintain a neutral typing, texting or reading position.

### AVAILABLE IN FOUR OPTIONS:

#### TCL360

TCENTRIC HEIGHT, LATERAL & SWIVEL ADJUSTABLE

#### TC360

TCENTRIC HEIGHT & SWIVEL ADJUSTABLE

#### TCL

TCENTRIC HEIGHT & LATERAL ADJUSTABLE

#### TC

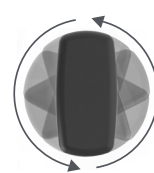
TCENTRIC 4" HEIGHT ADJUSTABLE



4" Height Adjustment



2 1/2" Lateral Adjustment



360° Swivel Adjustment





## tCentric Armrest Options



### TCL360

#### TCENTRIC HEIGHT, LATERAL & SWIVEL ADJUSTABLE

- Cushioned finger tip height adjustment
- Proprietary swivel adjustment rotates 360°
  - When rotated 180° the forearm pad moves 2" forward
- Arm lateral adjustment 2 ½" inward
- Solid ¼" thick spring steel frame, epoxy powder coated black
- Arms width adjustable 2" per arm
- Arm height adjustable from seat pan 6 ½"–10 ½"
- Arm pad: Polyurethane arm pad 4 ¾" w x 10" l

#### Additional Options

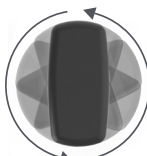
- tCentric small arm pad 3 ¾" w x 10" l [TCL360SM]
- Light Grey tCentric height adjustable armrest [TCL360G]
- Midnight Black tCentric armrest with Nytek Black upholstery [TCL360UPBL]
- Light Grey tCentric armrest with Nytek Grey upholstery [TCL360UPG]



4" Height Adjustment



tCentric Armpad



360° Swivel Adjustment

## TC360

### TCENTRIC HEIGHT & SWIVEL ADJUSTABLE

- Cushioned finger tip height adjustment
- Proprietary swivel adjustment rotates 360°
  - When rotated 180° the forearm pad moves 2" forward
- Solid ¼" thick spring steel frame, epoxy powder coated black
- Arms width adjustable 2" per arm
- Arm height adjustable from seat pan 5 ¾"–9 ¾"
- Arm pad: Polyurethane arm pad 4 ¾" w x 10" l

#### Additional Options

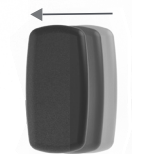
- tCentric small arm pad 3 ¾" w x 10" l [TC360SM]
- Light Grey tCentric height & swivel adjustable armrest [TC360G]



4" Height Adjustment



tCentric Armpad



2 ½" Lateral Adjustment

## TCL

### TCENTRIC HEIGHT & LATERAL ADJUSTABLE

- Cushioned finger tip height adjustment
- Arm lateral adjustment 2 ½" inwards
- Solid ¼" thick spring steel frame, epoxy powder coated black
- Arms width adjustable 2" per arm
- Arm height adjustable from seat pan 5 ¾"–9 ¾"
- Arm pad: Polyurethane arm pad 4 ¾" w x 10" l

#### Additional Options

- tCentric small arm pad 3 ¾" w x 10" l [TCLSM]
- Light Grey tCentric height and lateral adjustable armrest [TCLG]



4" Height Adjustment



tCentric Armpad

## TC

### TCENTRIC 4" HEIGHT ADJUSTABLE

- Cushioned finger tip height adjustment
- Solid ¼" thick spring steel frame, epoxy powder coated black
- Arms width adjustable 2" per arm
- Arm height adjustable from seat pan 5 ¾"–9 ¾"
- Arm pad: Polyurethane arm pad 4 ¾" w x 10" l

#### Additional Options

- Light Grey tCentric height adjustable armrest [TCG]



## Height, Lateral & Swivel Adjustable Arms



### 4ATCL360

#### HEIGHT, LATERAL & SWIVEL ADJUSTABLE

- Finger trigger height adjustment
- Proprietary swivel adjustment rotates 360°
  - When rotated 180° the forearm pad moves 2" forward
- Arm lateral adjustment 2 ½" inward
- Solid ¼" thick spring steel frame, epoxy powder coated black
- Arms width adjustable 2" per arm
- Arm height adjustable from seat pan 8 ¼"–12 ¼"
- Arm pad: Polyurethane arm pad 4 ¾" w x 10" l





## Height & Swivel Adjustable Arms



### 3SWVOT

#### 3" HEIGHT & SWIVEL ADJUSTABLE

- Finger tip height adjustment
- Proprietary swivel adjustment rotates 360°
  - When rotated 180° the forearm pad moves 3" forward
- Solid ¼" thick spring steel frame, epoxy powder coated black
- Arms width adjustable 2" per arm
- Arm height adjustable from seat pan 6 ¾"–9 ¾"
- Arm cap: Oval tube polyurethane arm pad 4 ¼"w x 10 ⅝"l

#### Additional Options

- Short polyurethane arm pad 4 ¼"w x 9"l [3SWVOTSH]
  - When rotated 180° the forearm pad moves 1 ½" forward

# Height & Swivel Adjustable Arms *continued*



## 4ATC360

### HEIGHT & SWIVEL ADJUSTABLE

- Finger trigger height adjustment
- Proprietary swivel adjustment rotates 360°
  - When rotated 180° the forearm pad moves 2" forward
- Arm lateral adjustment 2 ½" inwards
- Solid ¼" thick spring steel frame, epoxy powder coated black
- Arms width adjustable 2" per arm
- Arm height adjustable from seat pan 7 ¼"–11 ¼"
- Arm pad: Polyurethane arm pad 4 ¾" w x 10" l



## SWV

### HEIGHT & SWIVEL ADJUSTABLE

- Finger trigger height adjustment
- Proprietary swivel adjustment rotates 360°
  - When rotated 180° the forearm pad moves 2" forward
- Solid ¼" thick spring steel frame, epoxy powder coated black
- Arms width adjustable 2" per arm
- Arm height adjustable from seat pan 6 ¼"–10 ¼"
- Arm pad: Oval Black Destiny upholstered padded arm pad 5 ¼" w x 10" l

### Additional Options

- Oval tube polyurethane 4 ¼" w x 10 ⅝" l
  - When rotated 180° the arm pad moves 3" forward [SWVOT]
- Oval tube polyurethane short arm pad 4 ¼" w x 9" l
  - When rotated 180° the arm pad moves 1 ½" forward [SWVOTSH]





## Height & Lateral Adjustable Arms



### 4ATCL

#### HEIGHT & LATERAL ADJUSTABLE

- Finger trigger height adjustment
- Arm lateral adjustment 2 ½" inwards
- Solid ¼" thick spring steel frame, epoxy powder coated black
- Arms width adjustable 2" per arm
- Arm height adjustable from seat pan 8 ¼"–12 ¼"
- Arm pad: Polyurethane arm pad 4 ¾"w x 10"l



## Height Adjustable Arms



### 4ATC

#### 4" HEIGHT ADJUSTABLE

- Finger trigger height adjustment
- Solid  $\frac{1}{4}$ " thick spring steel frame, epoxy powder coated black
- Arms width adjustable 2" per arm
- Arm height adjustable from seat pan 7"–11"
- Arm pad: Polyurethane arm pad 4  $\frac{3}{4}$ "w x 10"l

# Height Adjustable Arms *continued*



## 4ATAOT

### 4" HEIGHT ADJUSTABLE

- Finger trigger height adjustment
- Solid  $\frac{1}{4}$ " thick spring steel frame, epoxy powder coated black
- Arms width adjustable 2" per arm
- Arm height adjustable from seat pan 5  $\frac{1}{4}$ "–9  $\frac{1}{4}$ "
- Arm pad: Oval tube polyurethane arm pad 4  $\frac{1}{4}$ "w x 10  $\frac{5}{8}$ "l

#### Additional Options

- Oval tube polyurethane short arm pad 4  $\frac{1}{4}$ "w x 9"l [4ATAOTSH]



## 3ATAOT

### 3" HEIGHT ADJUSTABLE

- Finger tip height adjustment
- Solid  $\frac{1}{4}$ " thick spring steel frame, epoxy powder coated black
- Arms width adjustable 2" per arm
- Arm height adjustable from seat pan 6"–9"
- Arm pad: Oval tube polyurethane arm pad 4  $\frac{1}{4}$ "w x 10  $\frac{5}{8}$ "l

#### Additional Options

- Oval tube polyurethane short arm pad 4  $\frac{1}{4}$ "w x 9"l [3ATAOTSH]

# Fixed Arms



## BRAR

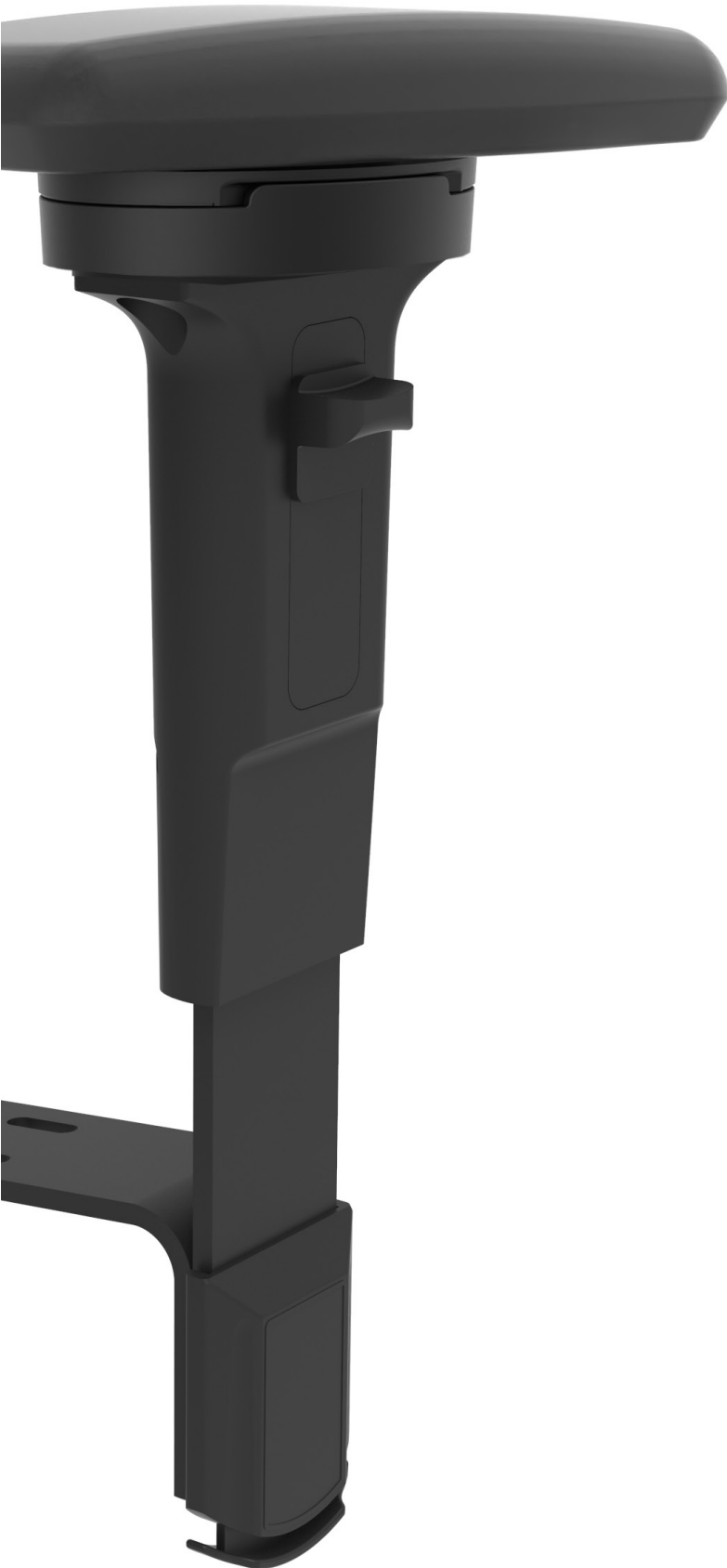
### FIXED ARM

- Fixed arm with polyurethane pad
- Arm height from seat pan 8  $\frac{1}{2}$ "
- Polyurethane arm pad 3  $\frac{1}{2}$ "w x 10"l

#### Additional Options

- Arm bracket with chrome accent [BRARCH]

# Swing Away, Height, Swivel & Lateral Adjustable Arms



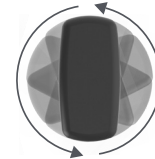
tCentric  
Armpad



3" Height  
Adjustment



2 ½" Lateral  
Adjustment



360° Swivel  
Adjustment



Swing Away  
Adjustment

## SATCL360

### SWING AWAY, HEIGHT, SWIVEL & LATERAL ADJUSTABLE

- Finger trigger height adjustment
- Swing away, finger adjustment
- Proprietary swivel adjustment rotates 360°
  - When rotated 180° the forearm pad moves 2" forward
- Arm lateral adjustment 2 ½" inward
- Solid ¼" thick spring steel frame, epoxy powder coated black
- Arms width adjustable 2" per arm
- Arm height adjustable from seat pan 9"-12"
- Arm pad: Polyurethane arm pad 4 ¾"w x 10"l





### SATC360

#### SWING AWAY, HEIGHT & SWIVEL ADJUSTABLE

- Finger trigger height adjustment
- Swing away, finger adjustment
- Proprietary swivel adjustment rotates 360°
  - When rotated 180° the forearm pad moves 2" forward
- Solid ¼" thick spring steel frame, epoxy powder coated black
- Arms width adjustable 2" per arm
- Arm height adjustable from seat pan 8"-11"
- Arm pad: Polyurethane arm pad 4 ¾"w x 10"l



### SATCL

#### SWING AWAY, HEIGHT & LATERAL ADJUSTABLE

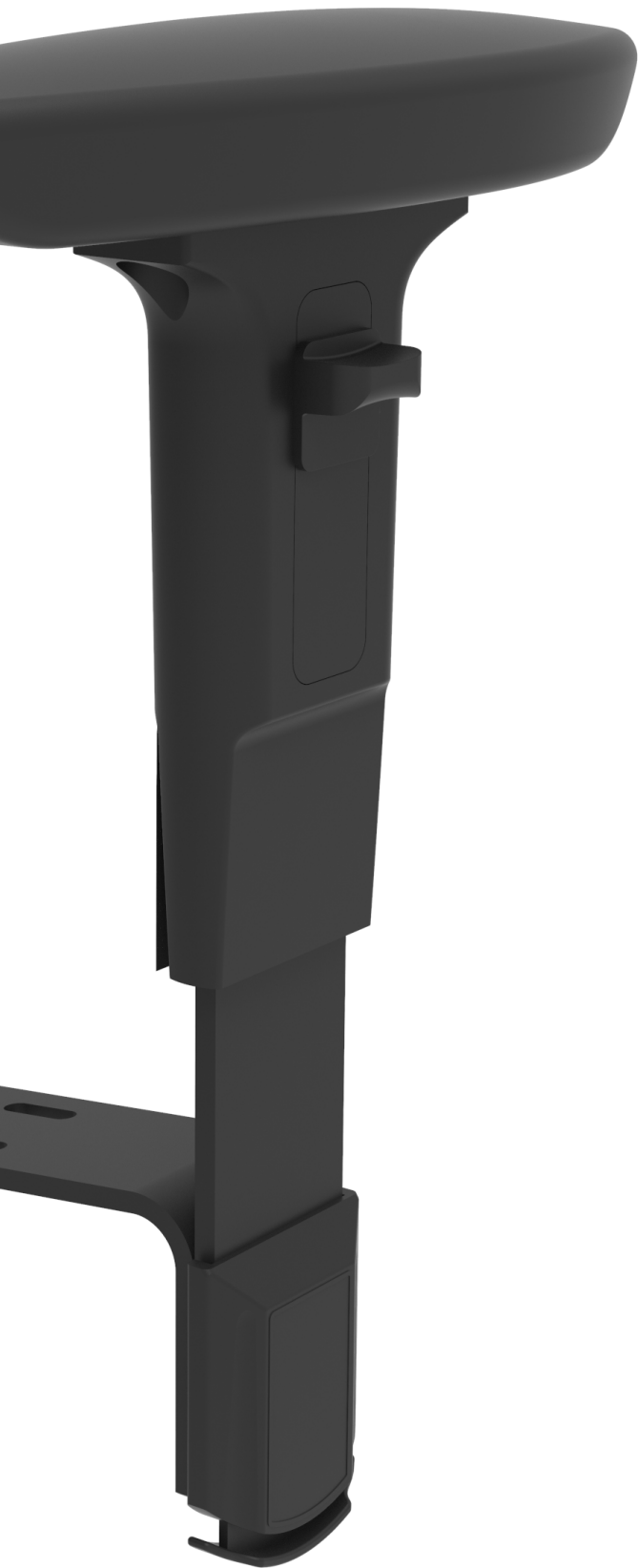
- Finger trigger height adjustment
- Swing away, finger adjustment
- Arm lateral adjustment 2 ½" inward
- Solid ¼" thick spring steel frame, epoxy powder coated black
- Arms width adjustable 2" per arm
- Arm height adjustable from seat pan 9"-12"
- Arm pad: Polyurethane arm pad 4 ¾"w x 10"l



### SATC

#### SWING AWAY, HEIGHT ADJUSTABLE

- Finger trigger height adjustment
- Swing away, finger adjustment
- Solid ¼" thick spring steel frame, epoxy powder coated black
- Arms width adjustable 2" per arm
- Arm height adjustable from seat pan 7 ¾"-10 ¾"
- Arm pad: Polyurethane arm pad 4 ¾"w x 10"l



## Swing Away, Height Adjustable Arms

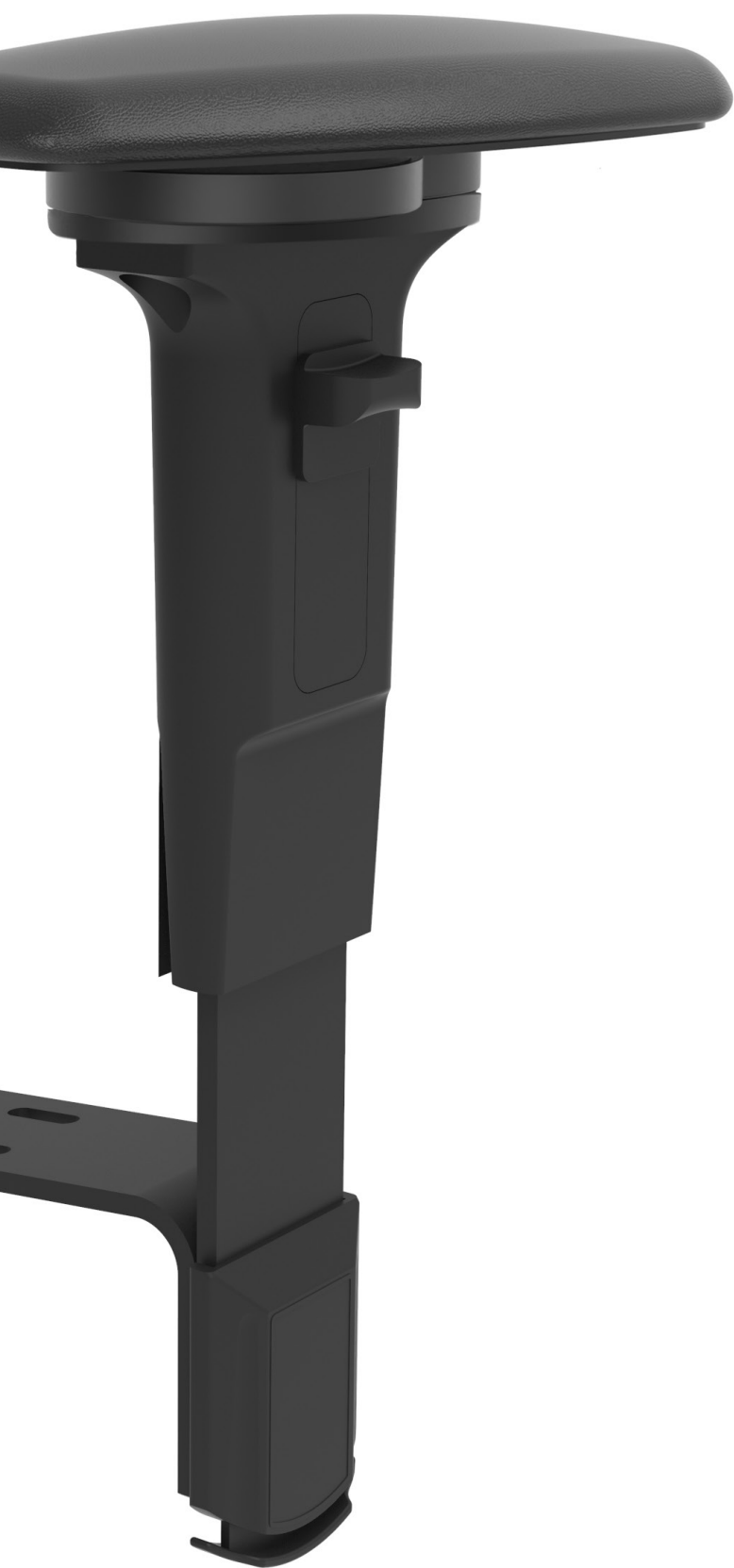


### SATAOT

#### SWING AWAY, HEIGHT ADJUSTABLE

- Finger trigger height adjustment
- Swing away, finger adjustment
- Solid  $\frac{1}{4}$ " thick steel frame, epoxy powder coated black
- Arms width adjustable 2" per arm
- Arm height adjustment from seat pan 7  $\frac{3}{4}$ "–10  $\frac{1}{2}$ "
- Arm pad: Polyurethane oval tube arm cap  
4  $\frac{1}{2}$ "w x 10  $\frac{5}{8}$ "l





## Swing Away, Height & Swivel Adjustable Arms

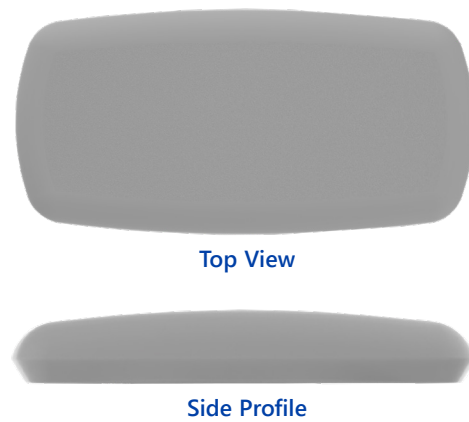


### SATASWV

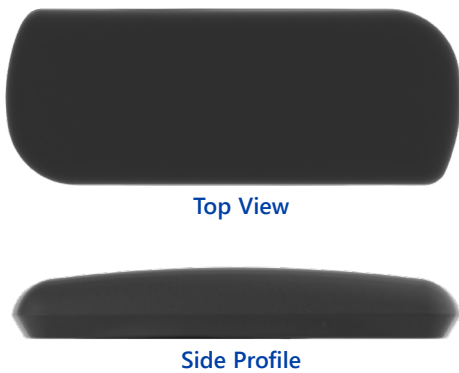
#### SWING AWAY, HEIGHT & SWIVEL ADJUSTABLE

- Finger trigger height adjustment
- Swing away, finger adjustment
- Proprietary swivel adjustment rotates 360°
  - When rotated 180° the forearm pad moves 2" forward
- Solid 1/4" thick steel frame, epoxy powder coated black
- Arms width adjustable 2" per arm
- Arm height adjustment from seat pan 8 7/8"–11 5/8"
- Arm pad: Oval upholstered padded arm pad 5 3/4"w x 10"l

# tCentric Arm Pad Options



## TCENTRIC SMALL ARM PAD



## TCENTRIC ARMPAD

---

### TCENTRIC POLYURETHANE ARM PAD

- Arm pad: Polyurethane arm pad 4  $\frac{3}{4}$ "w x 10" l
- Upholstery options include:
  - Fabric [OVALF]
  - Leather [OVALL]

### Additional Options

- tCentric small arm pad 3  $\frac{3}{4}$ "w x 10"l [TCL360SM]
- Light Grey tCentric height adjustable armrest [TCL360G]
- Midnight Black tCentric armrest with Nytek Black upholstery [TCL360UPBL]



# Arms Pad Options



Top View



Side Profile



Top View



Side Profile

## OVAL

---

### OVAL UPHOLSTERED ARM PAD

- Upholstered in Black Destiny, an engineered Nytek leather match
- 5 ¼" w x 10" l
- Upholstery options include:
  - Fabric [OVALF]
  - Leather [OVALL]

## OT

---

### OVAL TUBE ARM PAD

- 4 ¼" w x 10 ⅝" l
- Polyurethane arm cap

#### Additional Options

- Oval tube polyurethane short arm pad option [OTSH]
  - Short polyurethane arm pad option 4 ½" w x 9" l
- Oval tube upholstered arm pad [OTOVAL]
  - 4 ½" w x 10 ⅝" l
- Upholstered in Black Destiny, an engineered Nytek leather match.
- Upholstery options include:
  - Fabric [OTF]
  - Black Destiny [OTU]
  - Leather [PTL]



# ergoCentric®

fx: 1 866 GET ERGO | 905 696-6800

ph: 1 800 848-5190 | 905 696-0899

[orders@ergocentric.com](mailto:orders@ergocentric.com)

[ergocentric.com](https://ergocentric.com)

1/2024 v3



ergoCentric® and The science of sitting® are registered trademarks of ergoCentric Inc.  
All other trademarks, registered trademarks and logos are the property of their respective owners.