

# A Quick Reference Guide to ergoCentric Seating Systems

---

## Freestanding Height Adjustable Work Surfaces Category 2

EXCLUSIVELY FOR:

**Federal Government**

Workspace Supply Arrangement

SA# E60PQ-140003/023/PQ

Revised:08/06/2023

ergoCentric<sup>®</sup>

# Tables of contents

- 1 Key features to look for a freestanding height adjustable work surface
- 2 how to order
- 5 Table specifications
  - 6 2-leg expandable frames
  - 7 2LV frames
  - 8 2-Leg modular frames
  - 9 3-Leg modular frames
  - 10 Tabletop specifications
  - 11 3" Grommet hole location
- 12 Optional accessory add-ons
  - 12 upCentric cable management solutions
  - 13 Power & data accessories
  - 15 Foot Flexor
  - 15 Anti fatigue mats
  - 16 Divider panels
- 23 Warranty information



# Key features to look for in a Freestanding Height Adjustable Work Surface

Height adjustable tables have become a popular choice in today's workspace. With so many brands and options to choose from, a table that satisfies your clients' needs can be challenging - we are here to help!

The upCentric( ----) allows users to easily adjust their work surface to the appropriate height for their unique seated posture, and alternate between seated and standing positions throughout the work day. This adjustability reduces aches, pains, stress and tension, and improves circulation throughout the body. Moving the table is intuitive with the easy-to-use up/down control with four position memory. The quiet motors housed in each of the table's legs ensure a quick, smooth transition in position. The durable open frame design provides optimal knee clearance and space for storage.

Here are some key features to look for when buying a Freestanding Height Adjustable Work Surface.

## 1 Quick and easy installation

The upCentric is one of the simplest height adjustable tables to assemble. Printed and video instructions make assembling the upCentric easy enough to complete in approximately 15 minutes.

## 2 Built-in safety feature

Patented anti-collision system sensor provides enhanced safety to help prevent injury and equipment damage. When the table is in motion, if it encounters any external resistance or unbalance in the tabletop, the gyro-sensor picks up the disturbance immediately and enacts a safety stop.

## 3 Digital display control

Four presettable memory position. One-touch adjustment automatically adjusts to your preset position. Minimum/maximum height adjustments at any position. Customizable digital display setting for starting height and converting between metric and imperial.

## 4 Low power draw

The upCentric is one of the most efficient electric height adjustable tables in the market, minimizing operating and stand-by power draw to help you save money.

## 5 Low sound level

The upCentric is one of the quietest height adjustable tables on the market, at 39dB.

## 6 Mesh wire management sleeve included

Assists with the organization and presentation of cables and wires in each workstation





# How to order an upCentric® Freestanding Height Adjustable Work Surface

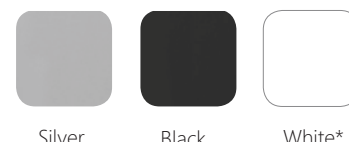
## Step 1:

Choose a Height Adjustable Work Surface  
See page 3  
e.g. CGSAMOD-2L-22-24X30

SIZE	GOCUID	TABLE	FRAME COLOURS	LAMINATE FINISHES
RECTANGULAR TABLES				
24" x 30"	2WSSREXXL24L30BELXX	CGSAMOD-2L-22-24X30	Codes for finishes see page 10	
24" x 36"	2WSSREXXL24L36BELXX	CGSAMOD-2L-22-24X36		
24" x 42"	2WSSREXXL24L42BELXX	CGSAMOD-2L-22-24X42		
24" x 48"	2WSSREXXL24L48BELXX	CGSA-2LV-22-24X48		
24" x 48"	2WSSREXXL24L48BELXX	CGSA-2L-22-WHITE-24X48		

## Step 2:

Select frame colour  
e.g. Silver



\*White is not available on Rectangular tables 42" W and smaller, or on 3L 120° Wing Shape tables

\*\*White frames are only available on Rectangular tables, 48" and larger, and are a higher price than Silver and Black

## Step 3:

Select laminate finish  
See page 10  
e.g. Manitoba Maple

OPTIONS	
HPL-High Pressure Laminate	
Designer White	28
Manitoba Maple	37
Sap Walnut	38
White Cypress	39
Light Grey	41
Graphite Wood	42

## Step 4:

Choose power and wire management accessories\*  
See page 12-14

\*The cumulative sum of all power and wire management accessories may not exceed 30% of the Height Adjustable Work Surface purchase price.  
e.g. A CGSAMOD-2L-22-24X30 table has a ceiling price of \$948.98 - you may add up to \$284.69 (30% of \$948.98) worth of accessories to that table.





## Freestanding Height Adjustable Work Surface Ordering Chart

SIZE	GOCUID	TABLE	FRAME COLOURS	LAMINATE FINISHES
24" x 30"	2WSSREXXL24L30BELXX	CGSAMOD-2L-22-24X30	Silver or Black	\$948.98
24" x 36"	2WSSREXXL24L36BELXX	CGSAMOD-2L-22-24X36	Silver or Black	\$948.98
24" x 42"	2WSSREXXL24L42BELXX	CGSAMOD-2L-22-24X42	Silver or Black	\$948.98
24" x 48"	2WSSREXXL24L48BELXX	CGSA-2LV-22-24X48	Silver or Black	\$904.52
24" x 48"	2WSSREXXL24L48BELXX	CGSA-2L-22-WHITE-24X48	White	\$967.95
24" x 54"	2WSSREXXL24L52BELXX	CGSA-2LV-22-24X54-3GHL-3GHR	Silver or Black	\$922.40
24" x 54"	2WSSREXXL24L54BELXX	CGSA-2L-22-WHITE-24X54-3GHL-3GHR	White	\$985.85
24" x 60"	2WSSREXXL24L60BELXX	CGSA-2LV-22-24X60-3GHL-3GHR	Silver or Black	\$940.82
24" x 60"	2WSSREXXL24L60BELXX	CGSA-2L-22-WHITE-24X60-3GHL-3GHR	White	\$1,003.76
24" x 66"	2WSSREXXL24L66BELXX	CGSA-2LV-22-24X66-3GHL-3GHR	Silver or Black	\$958.71
24" x 66"	2WSSREXXL24L66BELXX	CGSA-2L-22-WHITE-24X66-3GHL-3GHR	White	\$1,022.19
24" x 72"	2WSSREXXL24L72BELXX	CGSA-2LV-22-24X72-3GHL-3GHR	Silver or Black	\$976.59
24" x 72"	2WSSREXXL24L72BELXX	CGSA-2L-22-WHITE-24X72-3GHL-3GHR	White	\$1,040.10
30" x 30"	2WSSREXXL30L30BELXX	CGSAMOD-2L-29-30X30-3GHC	Silver or Black	\$981.52
30" x 36"	2WSSREXXL30L36BELXX	CGSAMOD-2L-29-30X36-3GHC	Silver or Black	\$981.52
30" x 42"	2WSSREXXL30L42BELXX	CGSAMOD-2L-29-30X42-3GHC	Silver or Black	\$981.52
30" x 48"	2WSSREXXL30L48BELXX	CGSA-2LV-29-30X48-3GHC	Silver or Black	\$940.82
30" x 48"	2WSSREXXL30L48BELXX	CGSA-2L-29-WHITE-30X48-3GHC	White	\$1,003.76
30" x 54"	2WSSREXXL30L54BELXX	CGSA-2LV-29-30X54-3GHL-3GHR	Silver or Black	\$963.58
30" x 54"	2WSSREXXL30L54BELXX	CGSA-2L-29-WHITE-30X54-3GHL-3GHR	White	\$1,027.07
30" x 60"	2WSSREXXL30L60BELXX	CGSA-2LV-29-30X60-3GHL-3GHR	Silver or Black	\$986.87
30" x 60"	2WSSREXXL30L54BELXX	CGSA-2L-29-WHITE-30X60-3GHL-3GHR	White	\$1,050.39
30" x 66"	2WSSREXXL30L66BELXX	CGSA-2LV-29-30X66-3GHL-3GHR	Silver or Black	\$1,009.10
30" x 66"	2WSSREXXL30L66BELXX	CGSA-2L-29-WHITE-30X66-3GHL-3GHR	White	\$1,072.64
30" x 72"	2WSSREXXL30L72BELXX	CGSA-2LV-29-30X72-3GHL-3GHR	Silver or Black	\$1,031.85
30" x 72"	2WSSREXXL30L72BELXX	CGSA-2L-29-WHITE-30X72-3GHL-3GHR	White	\$1,094.88
36" x 30"	2WSSREXXL36L30BELXX	CGSAMOD-2L-29-36X30-3GHC	Silver or Black	\$983.07
36" x 36"	2WSSREXXL36L36BELXX	CGSAMOD-2L-29-36X36-3GHC	Silver or Black	\$983.07
36" x 42"	2WSSREXXL36L42BELXX	CGSAMOD-2L-29-36X42-3GHC	Silver or Black	\$983.07
36" x 48"	2WSSREXXL36L48BELXX	CGSA-2LV-29-36X48-3GHC	Silver or Black	\$1,018.32
36" x 48"	2WSSREXXL36L48BELXX	CGSA-2L-29-WHITE-36X48-3GHC	White	\$1,081.86
36" x 54"	2WSSREXXL36L54BELXX	CGSA-2LV-29-36X54-3GHL-3GHR	Silver or Black	\$1,100.70
36" x 54"	2WSSREXXL36L54BELXX	CGSA-2L-29-WHITE-36X54-3GHL-3GHR	White	\$1,164.31
36" x 60"	2WSSREXXL36L60BELXX	CGSA-2LV-29-36X60-3GHL-3GHR	Silver or Black	\$1,166.29
36" x 60"	2WSSREXXL36L60BELXX	CGSA-2L-29-WHITE-36X60-3GHL-3GHR	White	\$1,229.95
36" x 66"	2WSSREXXL36L66BELXX	CGSA-2LV-29-36X66-3GHL-3GHR	Silver or Black	\$1,191.77
36" x 66"	2WSSREXXL36L66BELXX	CGSA-2L-29-WHITE-36X66-3GHL-3GHR	White	\$1,255.45
36" x 72"	2WSSREXXL36L72BELXX	CGSA-2LV-29-36X72-3GHL-3GHR	Silver or Black	\$1,215.08
36" x 72"	2WSSREXXL36L72BELXX	CGSA-2L-29-WHITE-36X72-3GHL-3GHR	White	\$1,278.24
120-36" x 24"	2WSSREXXL24L36BELXX	CGSAMOD-3L-120-36X24-3GHC	Silver or Black	\$1,826.58
120-42" x 24"	2WSSREXXL24L42BELXX	CGSAMOD-3L-120-42X24-3GHC	Silver or Black	\$1,826.58
120-48" x 24"	2WSSREXXL24L48BELXX	CGSAMOD-3L-120-48X24-3GHC	Silver or Black	\$1,854.20
120-54" x 24"	2WSSREXXL24L54BELXX	CGSAMOD-3L-120-54X24-3GHC	Silver or Black	\$1,854.20
120-36" x 30"	2WSSREXXL30L36BELXX	CGSAMOD-3L-120-36X30-3GHC	Silver or Black	\$1,836.38
120-42" x 30"	2WSSREXXL30L42BELXX	CGSAMOD-3L-120-42X30-3GHC	Silver or Black	\$1,837.85

\*\*Codes for frame finishes see page 9



## Lead time

All ergoCentric furniture orders have a 4-6 weeks lead time, with the exception of:

- Special sales programs and Next Day Shipping programs
- upCentric frame-only orders, 10-day lead time
- Accessories-only order (pedestals excluded), 10-day lead time

Non-standard products or custom orders may incur longer lead times. Consult with your sales reps for more info.

## Freight policies



### Tables and/or Pedestals

Province	Min. Charge	Shipments \$10,000 list and under	Shipments over \$10,000 list
Western Canada (BC, AB, SK, MB)	\$175	5% of list	Call for quote
Ontario/ Quebec	\$150	4% of list	Call for quote
Atlantic Canada (NL, NS, PE, NB)	\$200	6% of list	Call for quote
Northern Canada (YT, NT, NU)	Call for quote		

### Accessories and/or Panels only:

Province	Min. Charge	Shipments \$7,000 list and under	Shipments over \$7,000 list
Western Canada (BC, AB, SK, MB)	\$30	2.5% of list	Free shipping
Ontario/ Quebec	\$20	2% of list	Free shipping
Atlantic Canada (NL, NS, PE, NB)	\$40	3% of list	Free shipping
Northern Canada (YT, NT, NU)	Call for quote		



## Table specifications



UPMOD-3L-120 table  
(3-Leg modular frame in black)



UP-2L tables  
(2L-22 frame in white)



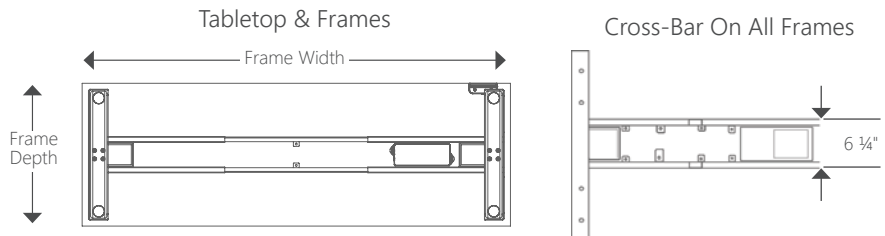
# Frame specifications

## 2-Leg

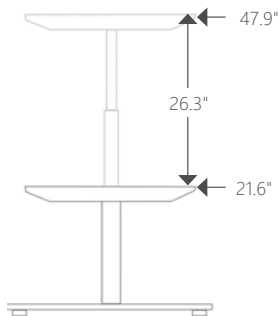
### expandable frames

\* The height range does not include the thickness of the tabletop.

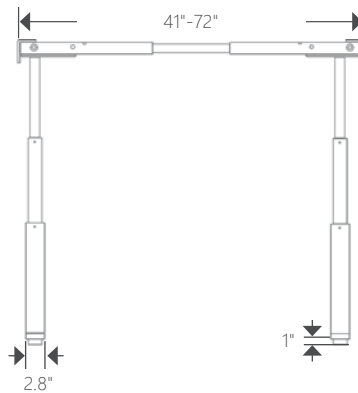
† Refers to depth of the bracket which tabletops are mounted to.



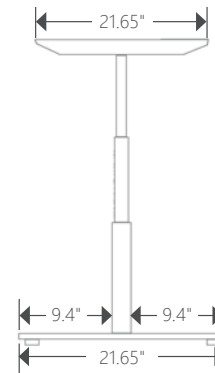
2-Leg Rectangular Frames  
[CGSA-2L-22 & CGSA-2L-29]  
Height Range



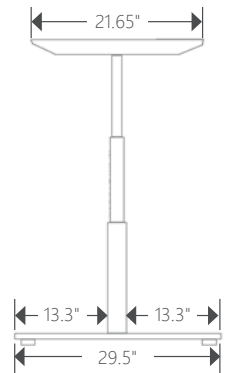
2-Leg Rectangular Frames  
[CGSA-2L-22 & CGSA-2L-29]  
Front View



2-Leg 22 Frame  
[CGSA-2L-22]  
Side View



2 Leg 29 Frame  
[CGSA-2L-29]  
Side View



### Specifications

	2-LEG 22 FRAME	2-L3G 29 FRAME
Frame code	CGSA-2L-22	CGSA-2L-29
Height range*	21.6"-47.9"	21.6"-47.9"
Width range	46"-77.3"	46"-77.3"
Depth of foot (tabletop bracket)†	21.65" (21.65")	29.5" (21.65")
Assembly time	15-25 minutes	15-25 minutes
Travel speed	1.6" per second	1.6" per second
Digital memory control buttons	4-Position memory	4-Position memory
Weight capacity**	300 lbs	300 lbs
Electric TiMOTION® motors	2 Motors	2 Motors
Max power draw	280 W	280 W
Standby power draw	<0.1 W	<0.1 W
Sound level	39 dB	39 dB
Accommodates tabletop sizes	22"d x 48"w up to 28"d x 96"w	29"d x 48"w up to 48" x 96"
Frame finish	White, Silver or black	White, Silver or black
Power cord length	71"	71"
Anti-collision gyro sensor	Standard	Standard
One-touch adjustment preset	Standard	Standard
Frame weight	86 lbs	93 lbs
Battery option	Available	Available
Certification	CSA/UL Listed   CSA22.2 No. 203   CSA22.2 No. 14   CSA22.2 No. 68-09 BIFMA G1   BIFMA X5.5   BIFMA e3 Level 2   GREENGUARD Gold®	CSA/UL Listed   CSA22.2 No. 203   CSA22.2 No. 14   CSA22.2 No. 68-09 BIFMA G1   BIFMA X5.5   BIFMA e3 Level 2   GREENGUARD Gold®

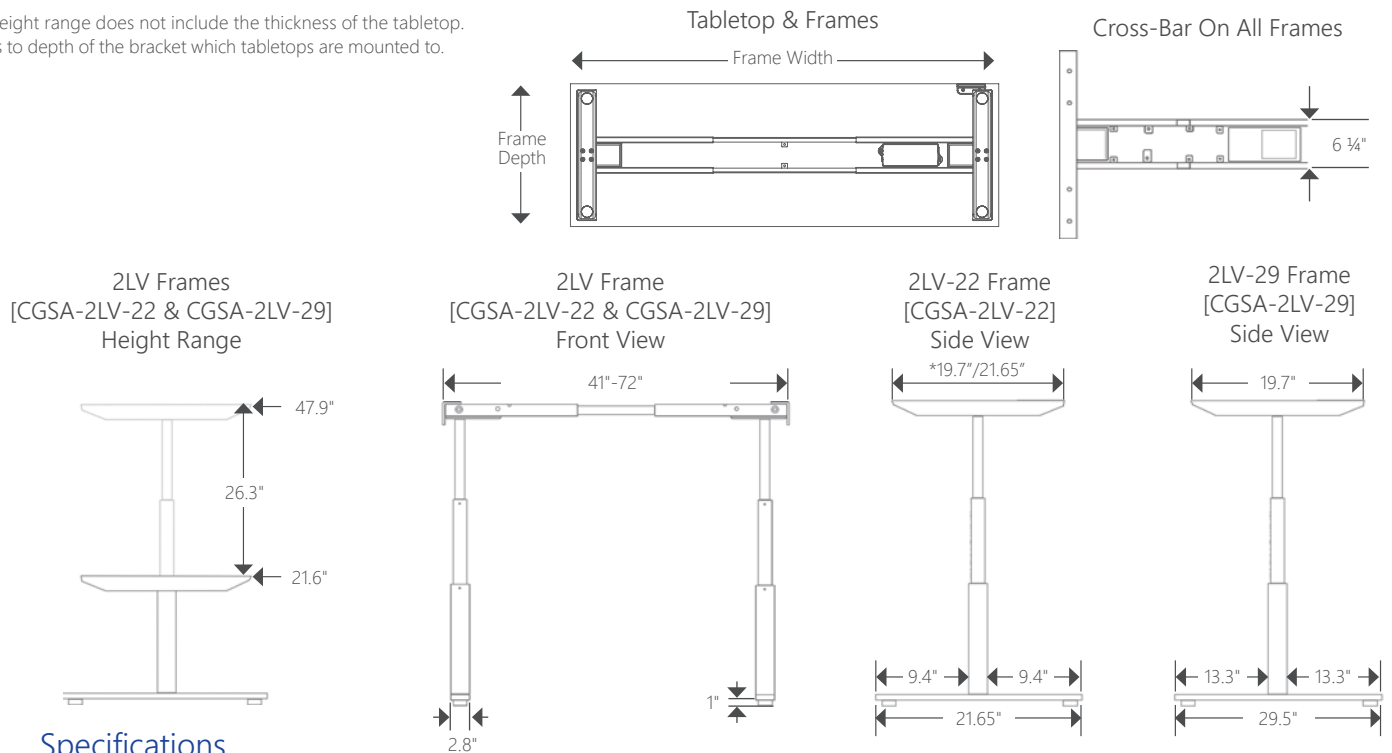


# Frame specifications

## 2LV frames

\* The height range does not include the thickness of the tabletop.

† Refers to depth of the bracket which tabletops are mounted to.



### Specifications

	2LV-22 FRAME	2LV-29 FRAME
Frame code	CGSA-2LV-22	CGSA-2LV-29
Height range*	21.6"-47.9"	21.6"-47.9"
Width range	41.3"-72.8"	41.3"-77.3"
Depth of foot (tabletop bracket)†	21.65" (21.65")	29.5" (21.65")
Assembly time	15-25 minutes	15-25 minutes
Travel speed	1.6" per second	1.6" per second
Digital memory control buttons	4-Position memory	4-Position memory
Weight capacity**	220 lbs	220 lbs
Electric TiMOTION® motors	2 Motors	2 Motors
Max power draw	180 W	180 W
Standby power draw	<0.1 W	<0.1 W
Sound level	39 dB	39 dB
Accommodates tabletop sizes	22" x 44" up to 28" x 84"	29" x 44" up to 46" x 84"
Frame finish	Silver or black	Silver or black
Power cord length	71"	71"
Anti-collision gyro sensor	Standard	Standard
One-touch adjustment preset	Standard	Standard
Frame weight	73 lbs	80 lbs
Battery option	Not Available	Not Available
Certification	CSA/UL Listed   CSA22.2 No. 203   CSA22.2 No. 14   CSA22.2 No. 68-09 BIFMA G1   BIFMA X5.5   BIFMA e3 Level 2   GREENGUARD Gold®	CSA/UL Listed   CSA22.2 No. 203   CSA22.2 No. 14   CSA22.2 No. 68-09 BIFMA G1   BIFMA X5.5   BIFMA e3 Level 2   GREENGUARD Gold®

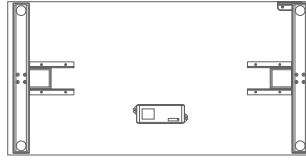


# Frame specifications

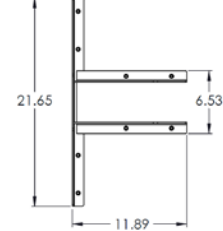
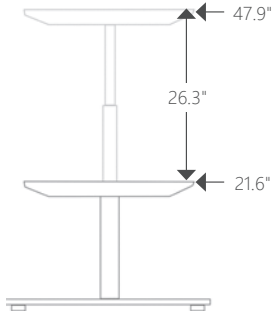
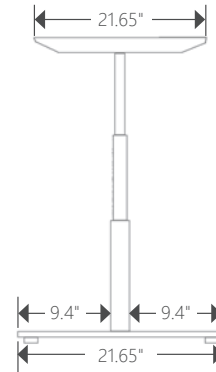
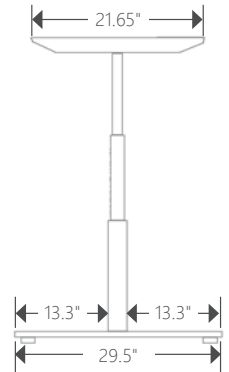
## 2-Leg modular frames

\* The height range does not include the thickness of the tabletop.

Rectangular &amp; Frame

2-Leg Modular Frames  
[CGSAMOD-2LV-22 & UPMOD-2LV-29]

Top Down View

2-Leg Modular Frames  
[CGSAMOD-2L-22 & CGSAMOD-2L-29]  
Height Range2-Leg Modular Frames  
[CGSAMOD-2L-22 & CGSAMOD-2L-29]  
Front View2-Leg 22 Modular  
[CGSAMOD-2LV-22]  
Side View2-Leg 29 Modular  
[CGSAMOD-2L-29]  
Side View

### Specifications

	2-LEG 22 MODULAR FRAME	2-LEG 29 MODULAR FRAME
Frame code	CGSAMOD-2L-22	CGSAMOD-2L-29
Height range*	21.6"-47.9"	21.6"-47.9"
Width range	N/A	N/A
Depth of foot (tabletop bracket)	21.65" (21.65")	29.5" (21.65")
Assembly time	15- 25 minutes	15- 25 minutes
Travel speed	1.6" per second	1.6" per second
Digital memory control buttons	4-Position memory	4-Position memory
Weight capacity**	225 lbs	225 lbs
Electric TiMOTION® motors	2 Motors	2 Motors
Max power draw	280 W	280 W
Standby power draw	<0.1 W	<0.1 W
Sound level	39 dB	39 dB
Accommodates tabletop sizes	22"d x 30" w up to 28"d x 47"w	29"d x30"w up to 36"d x 47"w
Frame finish	Silver or black	Silver or black
Power cord length	71"	71"
Anti-collision gyro sensor	Standard	Standard
One-touch adjustment preset	Standard	Standard
Frame weight	73 lbs	80 lbs
Battery option	Available	Available
Certification	CSA/UL Listed   CSA22.2 No. 203   CSA22.2 No. 14   CSA22.2 No. 68-09 BIFMA G1   BIFMA X5.5   BIFMA e3 Level 2   GREENGUARD Gold®	CSA/UL Listed   CSA22.2 No. 203   CSA22.2 No. 14   CSA22.2 No. 68-09 BIFMA G1   BIFMA X5.5   BIFMA e3 Level 2   GREENGUARD Gold®



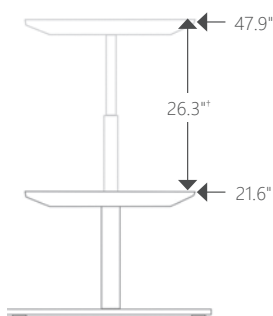
# Frame Specifications

## 3-Leg modular frame

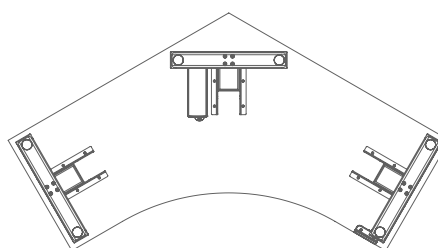
\* The height range does not include the thickness of the tabletop.

† Representation of the legs at 0° and 90° respectively.

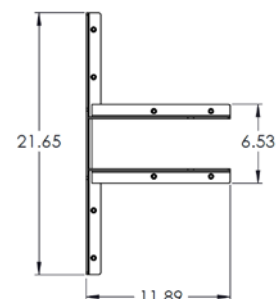
3-Leg Modular Frame  
[CGSAMOD-3L-120]  
Height Range



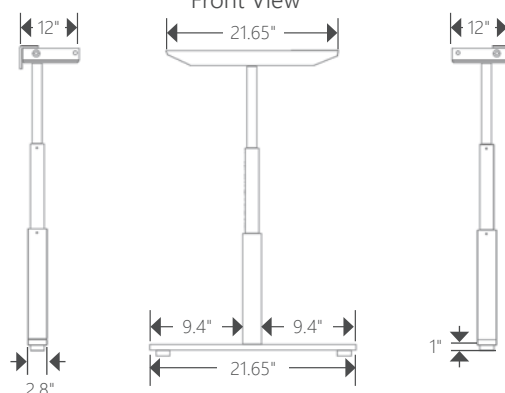
120° Tabletop & Frame



3-Leg Modular Frames  
Top Down View



3-Leg Modular Frame  
[CGSAMOD-3L-120]  
Front View†



## Specifications

	3-LEG MODULAR FRAME
Frame code	CGSAMOD-3L-120
Height range*	21.6" - 47.9"
Width range	24" Depth: 36" - 54"   30" Depth: 36" - 42"
Depth of foot (tabletop bracket)†	21.65" (21.65")
Assembly time	20 - 30 minutes
Travel speed	1.6" per second
Digital memory control buttons	4-Position memory
Weight capacity**	400 lbs
Electric TiMOTION® motors	3 Motors
Max power draw	280 W
Standby power draw	<0.1 W
Sound level	39 dB
Accommodates tabletop sizes	24" Depth: 36" - 54"   30" Depth: 36" - 42"
Frame finish	Silver or black
Power cord length	71"
Anti-collision gyro sensor	Standard
One-touch adjustment preset	Standard
Frame weight	105 lbs
Battery option	Not Available
Certification	CSA/UL Listed   CSA22.2 No. 203   CSA22.2 No. 14   CSA22.2 No. 68-09 BIFMA G1   BIFMA X5.5   BIFMA e3 Level 2   GREENGUARD Gold®



# Tabletop specifications

- Tabletop are constructed using 1" thick FSC-Certified 45 lbs particle board, High Pressure Laminate and 3 mm PVC-free edge band.
- All tabletops are made to exact printed dimensions.  
*e.g. CGSA-2LV-29-30X60 Height Adjustable Work Surface will measure to exactly 30" x 60", +/- 0.25" tolerance*

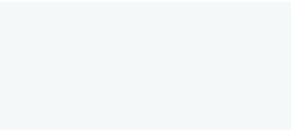
Edge Band

## Tabletop dimensions

- All standard tabletop sizes are exact to printed dimensions
- Tabletop sizes have an allowable tolerance of up to +/- 1/4"
- All non SA top dimensions are to be priced from the current standard on SA price book

## High Pressure Laminates [HPL]

- High Pressure Laminate tabletop are 1 1/16" thick, and are available in 6 finishes



Designer White 28



Manitoba Maple 37



Sap Walnut 38



White Cypress 39



Light Grey 41



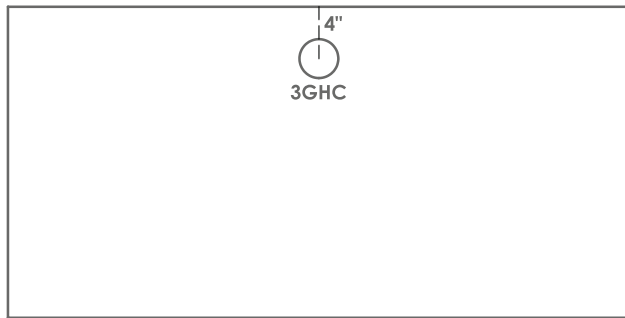
Graphite Wood 42



## 3" Grommet hole locations

- 3" grommet hole with plastic grommet cover
- Positioned 4" from each edge to center of hole
- Tables with a width of 48" or smaller must have at least one hole (3GHC standard)
- Tables with a width of 54" or larger must have at least two holes (3GHL & 3GHR standard)
- 120° Wing tables must have at least two holes (3GHL & 3GHR standard)
- Grommet holes may be added or moved from the standard position, but may not be removed

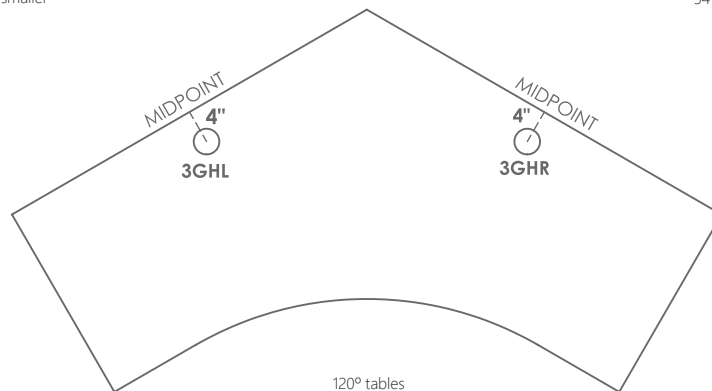
### Standard locations



48" wide and smaller

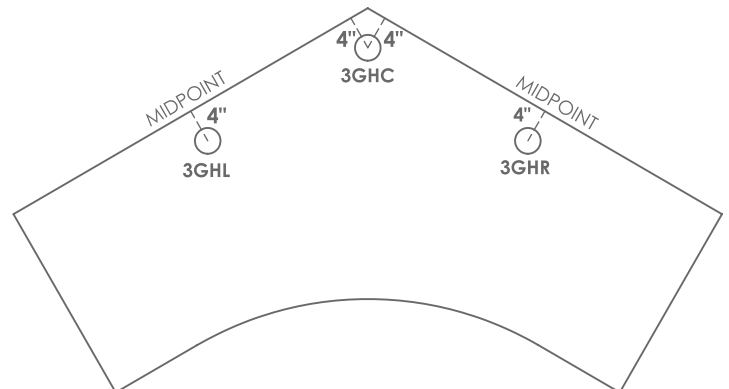
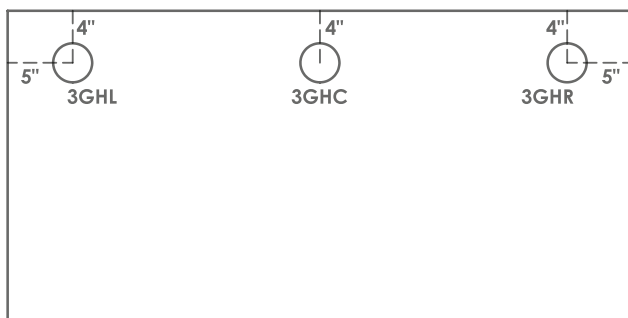


54" wide and larger



120° tables

### Options



# upCentric Cable Management Solutions

## ergoCentric cable management basket

- The upCentric cable management basket is used to route wires through a discreet cable channel that will improve the aesthetics in just about any room, and is a great way to conceal and protect cables. Lightweight and easy to handle and install, the upCentric cable management basket is available in three width sizes (28", 36" and 48") and two colours (black or silver).

Length	Code	Colour	List Price
28"	MCM28-BLACK	Black	\$137
28"	MCM28-SILVER	Silver	\$137
36"	MCM36-BLACK	Black	\$149
36"	MCM36-SILVER	Silver	\$149
48"	MCM48-BLACK	Black	\$161
48"	MCM48-SILVER	Silver	\$161

### Mesh colour options



Black



Silver

## upCentric cable management spine

- Integrates seamlessly with the upCentric desk and cable management basket
- Protects and conceals cables at your workstation
- Reduces cable clutter
- Lightweight and easy to install
- Adjustable with 30 vertebrae
- Customized weighted base for stability
- Overall length is 52" and is available in three finishes: white, silver, black

Colour	Code	List Price
White	VCMS-SP-WH	\$131
Silver	VCMS-SP-SL	\$131
Black	VCMS-SP-BK	\$131



**MCM28** - Use for 30", 36" and 42" wide work surfaces

**MCM36** - Use for 48" and 54" wide work surfaces

**MCM48** - Note: When using on UP-3L table, check how much space is available on the underside of the table in between the brackets. Outer dimensions of the tabletop may not always correlate to an equivalent amount of space.



## upCentric magnetic cable management spine

- Allows you to connect between two of the 3 strips of vertebrae in the standard model
- Includes 7 vertebrae with a magnetic strip attached
- Extra adaptor bracket for attaching the spine in-line with table leg

Colour	Code	List Price
White	VCMS-SP-MAG-WH	\$197
Silver	VCMS-SP-MAG-SL	\$197
Black	VCMS-SP-MAG-BK	\$197



## Power & data accessories

- The 3" grommet power and pop-up dock can be used anywhere that needs an easy access AC power and 5V DC 2.1 A USB charger. Simply bore a 3" hole for installation or replace a 3" grommet with any of the Dock-200 series. The simple touch of a finger tip release the spring-loaded lid of the 3" grommet and it will gently open up to reveal an AC outlet and USB charger.

Outlets	Code	Colour	List Price
<ul style="list-style-type: none"> <li>2 grounded AC outlet 15A rating</li> <li>10' 14 AWG power cord</li> <li>1000 joules surge protection</li> </ul>	DOCK200-BK	Black	\$232
<ul style="list-style-type: none"> <li>1 grounded AC outlet 15A rating</li> <li>2 USB charging ports with shared 2.1 charging power</li> <li>19' 14 AWG power cord</li> <li>1000 joules surge protection</li> </ul>	DOCK270-BK	Black	\$244



### Pop-up power harness

- The power harness is flush mounted and enriches everyday workflow when in use and can be tucked away when not. The AC receptacles are dynamically positioned for simpler power access handling.
- Note: Requires 3" bore for installation and a minimum of 12" clearance under mounting surface to operate correctly.

Outlets	Code	Colour	List Price
<ul style="list-style-type: none"> <li>2 AC 125V 12A</li> <li>Cat. 6 rated RJ45 ethernet coupler</li> <li>6' 14 AWG power cord</li> </ul>	TOWER01	Black	\$194
<ul style="list-style-type: none"> <li>2 AC receptacles, AC 125V 12A</li> <li>2 DC 5V USB charging ports - provides shared 4.2A of charging port</li> <li>6' 14 AWG power cord</li> </ul>	TOWER02	Black	\$194



Code	Colour	List Price
WC-BK	Black	\$137

- Fits 3" grommet hole
- Sits flush with tabletop
- For use with products equipped with wireless charging capabilities



Outlets	Code	Colour	List Price
<ul style="list-style-type: none"> <li>2 AC outlets</li> <li>5V USB charging port</li> </ul>	CD-WH	White	\$197
	CD-SA	Silver Aluminum	\$197

## OPTIONAL ACCESSORY ADD-ONS

### Clamp-on Power Dock, Black

- 2 AC outlets
- 2 5V USB charging port

Code	Colour	List Price
CD-STA	Black	\$155



### Power bar with 10' spiral wire

Outlets	Code	Colour	List Price
<ul style="list-style-type: none"> <li>• 6 AC outlets</li> <li>• 10' 14 AWGx3C spiral power cord</li> <li>• Overload protection with reset switch</li> <li>• Surge protection. Rating: 125V 60Hz 12A</li> </ul>	POWERBAR	Black	\$173



### Power bar with 10' spiral wire and 1' straight daisy chain plug

Outlets	Code	Colour	List Price
<ul style="list-style-type: none"> <li>• 6 AC outlets</li> <li>• 10' 14 AWGx3C spiral power cord</li> <li>• Daisy chain plug with surge protection</li> <li>• Overload protection with reset switch</li> <li>• Rating: 125V 60Hz 12A</li> <li>• Daisy chain plug</li> </ul>	POWERBAR-DC	Black	\$197



### Power bar with 10' cord

Outlets	Code	Colour	List Price
<ul style="list-style-type: none"> <li>• 6 AC outlets</li> <li>• 10' 14 AWGx3C straight power cord</li> <li>• Overload protection with reset switch</li> <li>• Rating 125 V 60Hz 12 A</li> </ul>	POWERBAR - STA	Black	\$102



## Foot flexor

- 1 ¾" laminated MDF footplate
- Foot plate height: 3 ½"
- Dimensions: 18"w x 11 ½"d
- Inset vinyl non-slip tread, ⅝" diameter chrome plated steel tube
- rubber non-slip feet
- Footplate and tubular frame are one part



Item	Height	Code	List Price
Foot Flexor	3 ½"	FOOTFLEXOR	\$169
Tall Foot Flexor	6"	TALLFOOTFLEXOR	\$192

## Anti-fatigue mats

- Work well in conjunction with standing height adjustable workstations, sit stand seating and stools
- Non-slip top and bottom with no-trip beveled edge
- Safe, non-toxic and latex-free (No PVC or BPAs)
- Flame resistant up to 200° C
- Dimensions: ¾" thick
- Available in black
- 1 year warranty

Anti-Fatigue Mat	Code	List Price
Anti-fatigue mat – 18" x 24"	AFM-18x24	\$108
Anti-fatigue mat – 36" x 24"	AFM-36x24	\$180





# Panel Material Options

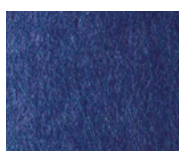
## - Privacy Panels and Framed Privacy Panels

### Decorative Acoustic Panels (Grade 1)

- Acoustic panels absorb internal and external sound influences reducing the noise level in a room
- Sturdy, tackable, recycled plastic
- Available in 6 colours
- Privacy Panels are ½" thick, Framed Privacy Panels are ¾" thick



Blue 01



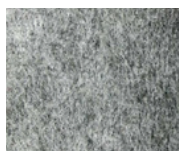
Navy 02



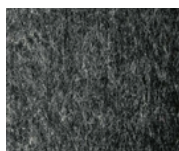
Cream 03



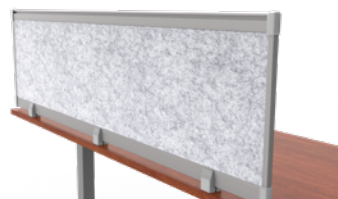
Silver 04



Gray 05



Ash 06



### Clear Acrylic Panels (Grade 1)

- Shatter-resistant thermoplastics
- Aesthetically pleasing, durable
- Privacy Panels are ¼" thick, Framed Privacy Panels are ¾" thick



### Frosted Acrylic Panels (Grade 2)

- Shatter-resistant thermoplastics
- Aesthetically pleasing, durable, visual privacy
- Privacy Panels are ¼" thick, Framed Privacy Panels are ¾" thick



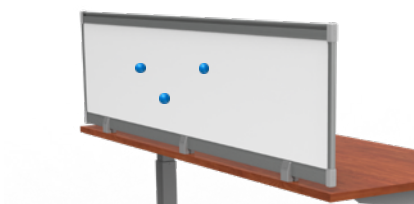
### Whiteboard Panels (Grade 2)

- High Pressure Laminates
- Writable surface, easy dry erase
- Framed Privacy Panels only, 3/4" thick



### Magnetic Whiteboard Panels (Grade 3)

- High Pressure Laminates
- Writable surface, easy dry erase, use as pinboard
- Framed Privacy Panels only, ¾" thick





# Panel Material Options

## - Modesty Panels and Modesty+Privacy Panels

### Decorative Acoustic Panels [DAP]

- Acoustic panels absorb internal and external sound influences reducing the noise level in a room
- Sturdy, tackable, recycled plastic
- ½" thick and available in 6 colours
- Modesty Panels and Modesty+Privacy Panels



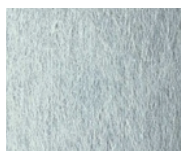
Blue 01



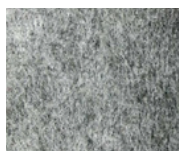
Navy 02



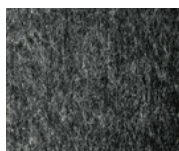
Cream 03



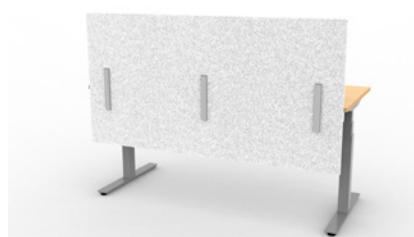
Silver 04



Gray 05

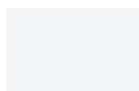


Ash 06



### Thermally Fused Laminates [TFL]

- Stylish, attractive and perfectly match surface finish
- Affordable, easy to clean and disinfect
- ¾" thick and available in 10 finishes
- Modesty Panels only



Designer  
White 28



Manitoba  
Maple 37



Sap  
Walnut 38



White  
Cypress 39



Light  
Grey 41



Graphite  
Wood 42

#### Notes:

Nominal sizes are used in product codes and do not match the exact dimensions of the panels. Panel widths are 1 ½" reduced from the nominal sizes in the panel codes. For example, a 72" wide panel will actually be 70 ½" wide.

When selecting a panel, select the panel that correlates with the tabletop size you are ordering it for. For example, if you order a 30" d x 60" w tabletop, you will need to order a 60" wide Modesty or Privacy Panel and the panel you will receive will be 58 ½" wide.





# Panel Mounts Options

## Clamp Brackets

- For use with Privacy Panels and Framed Privacy Panels
- Available in silver
- Direct mount shell clamps:
  - 2 Shell Clamps: 24" - 48" wide panel
  - 3 Shell Clamps: 54" - 72" wide panel
  - 4 Shell Clamps: 78" - 96" wide panel
- 2, 3, or 4 Shell Clamps are included with panel order depending on size of panel**
- Options:
  - Clamp mount, with clamp mounting bracket
  - Free standing, with free standing foot bracket



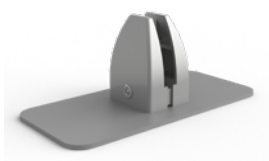
Options	Code	List Price
Clamp mounting bracket*	CM	\$54
Free standing foot bracket	FT	\$54

**Notes:** upcharge of \$54 applies regardless of panel size. Correct bracket quantities will be automatically calculated.

\* Clamp on table tops up to 1.5" thick.



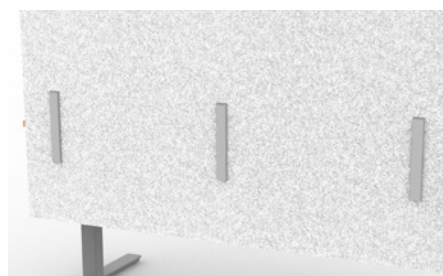
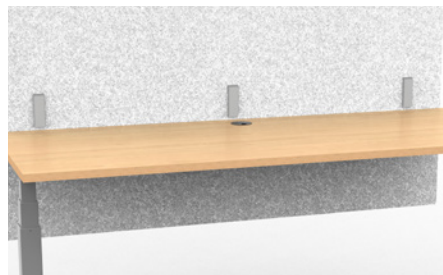
Clamp mounting bracket



Free standing foot bracket

## L-shape Brackets

- For use with Modesty Panels and Modesty+Privacy Panels
- Available in silver
- Brackets are included with panel order:
  - 2 brackets: 24" - 48" wide panel
  - 3 brackets: 54" - 72" wide panel
  - 4 brackets: 78" - 96" wide panel



## OPTIONAL ACCESSORY ADD-ONS

	PANEL TYPE	PANEL MATERIAL	SIZE (H x W)	BRACKET COLOUR	LIST PRICE (GRADE 1)	LIST PRICE (GRADE 2)
Ex.	PRIVACY-UNF -	01	12 x 24 -	BL/SL -	\$338	\$359
	PRIVACY-UNF -	xx -	12 x 24 -	xx -	\$338	\$359
	PRIVACY-UNF -	xx -	12 x 30 -	xx -	\$338	\$359
	PRIVACY-UNF -	xx -	12 x 36 -	xx -	\$338	\$359
	PRIVACY-UNF -	xx -	12 x 42 -	xx -	\$338	\$359
	PRIVACY-UNF -	xx -	12 x 48 -	xx -	\$344	\$364
	PRIVACY-UNF -	xx -	12 x 54 -	xx -	\$457	\$498
	PRIVACY-UNF -	xx -	12 x 60 -	xx -	\$491	\$532
	PRIVACY-UNF -	xx -	12 x 66 -	xx -	\$496	\$538
	PRIVACY-UNF -	xx -	12 x 72 -	xx -	\$496	\$538
	PRIVACY-UNF -	xx -	12 x 78 -	xx -	\$502	\$543
	PRIVACY-UNF -	xx -	12 x 84 -	xx -	\$535	\$577
	PRIVACY-UNF -	xx -	16 x 24 -	xx -	\$376	\$404
	PRIVACY-UNF -	xx -	16 x 30 -	xx -	\$376	\$404
	PRIVACY-UNF -	xx -	16 x 36 -	xx -	\$376	\$404
	PRIVACY-UNF -	xx -	16 x 42 -	xx -	\$376	\$404
	PRIVACY-UNF -	xx -	16 x 48 -	xx -	\$382	\$409
	PRIVACY-UNF -	xx -	16 x 54 -	xx -	\$533	\$588
	PRIVACY-UNF -	xx -	16 x 60 -	xx -	\$567	\$622
	PRIVACY-UNF -	xx -	16 x 66 -	xx -	\$572	\$628
	PRIVACY-UNF -	xx -	16 x 72 -	xx -	\$572	\$628
	PRIVACY-UNF -	xx -	16 x 78 -	xx -	\$578	\$633
	PRIVACY-UNF -	xx -	16 x 84 -	xx -	\$612	\$667
	PRIVACY-UNF -	xx -	20 x 24 -	xx -	\$443	\$483
	PRIVACY-UNF -	xx -	20 x 30 -	xx -	\$443	\$483
	PRIVACY-UNF -	xx -	20 x 36 -	xx -	\$443	\$483
	PRIVACY-UNF -	xx -	20 x 42 -	xx -	\$443	\$483
	PRIVACY-UNF -	xx -	20 x 48 -	xx -	\$448	\$488
	PRIVACY-UNF -	xx -	20 x 54 -	xx -	\$670	\$751
	PRIVACY-UNF -	xx -	20 x 60 -	xx -	\$703	\$784
	PRIVACY-UNF -	xx -	20 x 66 -	xx -	\$709	\$790
	PRIVACY-UNF -	xx -	20 x 72 -	xx -	\$709	\$790
	PRIVACY-UNF -	xx -	20 x 78 -	xx -	\$714	\$795
	PRIVACY-UNF -	xx -	20 x 84 -	xx -	\$747	\$828
	PRIVACY-UNF -	xx -	24 x 24 -	xx -	\$461	\$503
	PRIVACY-UNF -	xx -	24 x 30 -	xx -	\$461	\$503
	PRIVACY-UNF -	xx -	24 x 36 -	xx -	\$461	\$503
	PRIVACY-UNF -	xx -	24 x 42 -	xx -	\$461	\$503
	PRIVACY-UNF -	xx -	24 x 48 -	xx -	\$466	\$508
	PRIVACY-UNF -	xx -	24 x 54 -	xx -	\$698	\$782
	PRIVACY-UNF -	xx -	24 x 60 -	xx -	\$732	\$816
	PRIVACY-UNF -	xx -	24 x 66 -	xx -	\$738	\$822
	PRIVACY-UNF -	xx -	24 x 72 -	xx -	\$738	\$822
	PRIVACY-UNF -	xx -	24 x 78 -	xx -	\$743	\$827
	PRIVACY-UNF -	xx -	24 x 84 -	xx -	\$778	\$862

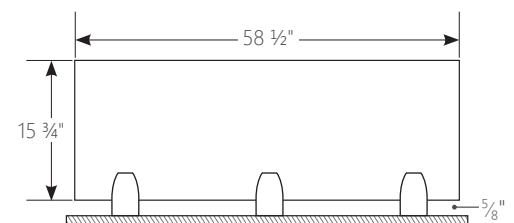
Grade 1 Materials	Code
Blue Decorative Acoustic Panel	01
Navy Decorative Acoustic Panel	02
Cream Decorative Acoustic Panel	03
Silver Decorative Acoustic Panel	04
Gray Decorative Acoustic Panel	05
Ash Decorative Acoustic Panel	06
Clear Acrylic Panel	CL

Grade 2 Materials	Code
Frosted Acrylic Panel	FR

Options	Code	List Price
Clamp mounting bracket	CM	\$54
Free standing foot bracket	FT	\$54

### Privacy Panels

- Non-framed acoustic or acrylic privacy panels
- Height options: 12", 16", 20", 24"
- Width options: 24" - 84" (in 6" increments)
- Shell Clamps
  - 2 Shell Clamps: 24" - 48" wide panel
  - 3 Shell Clamps: 54" - 72" wide panel
  - 4 Shell Clamps: 78" - 84" wide panel
- Panel mount options:
  - Direct mount to surface (Standard)
  - Clamp mount bracket [CM] or
  - Free standing foot bracket [FT]



ex. PRIVACY-UNF-01-16X60  
shown with 3 direct mount to surface brackets



Shipping charges may apply, see page 8 for freight policy.

## OPTIONAL ACCESSORY ADD-ONS

Ex.

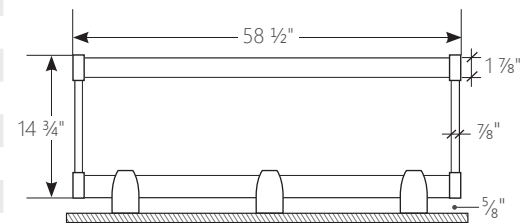
PANEL TYPE	Panel Material	Size (H x W)	Bracket Colour	List Price (Grade 1)	List Price (Grade 2)	List Price (Grade 3)
PRIVACY-FRM -	04 -	16 x 24 -	BL/SL -	\$398	\$434	\$464
PRIVACY-FRM -	xx -	16 x 24 -	xx -	\$398	\$434	\$464
PRIVACY-FRM -	xx -	16 x 30 -	xx -	\$413	\$451	\$464
PRIVACY-FRM -	xx -	16 x 36 -	xx -	\$429	\$468	\$534
PRIVACY-FRM -	xx -	16 x 42 -	xx -	\$431	\$471	\$663
PRIVACY-FRM -	xx -	16 x 48 -	xx -	\$525	\$573	\$679
PRIVACY-FRM -	xx -	16 x 54 -	xx -	\$557	\$608	\$796
PRIVACY-FRM -	xx -	16 x 60 -	xx -	\$588	\$642	\$811
PRIVACY-FRM -	xx -	16 x 66 -	xx -	\$680	\$742	\$827
PRIVACY-FRM -	xx -	16 x 72 -	xx -	\$712	\$777	\$842
PRIVACY-FRM -	xx -	16 x 78 -	xx -	\$771	\$842	\$912
PRIVACY-FRM -	xx -	16 x 84 -	xx -	\$804	\$877	\$950
PRIVACY-FRM -	xx -	16 x 90 -	xx -	\$851	\$929	\$1,007
PRIVACY-FRM -	xx -	16 x 96 -	xx -	\$863	\$942	\$1,021
PRIVACY-FRM -	xx -	20 x 24 -	xx -	\$436	\$476	\$495
PRIVACY-FRM -	xx -	20 x 30 -	xx -	\$450	\$491	\$495
PRIVACY-FRM -	xx -	20 x 36 -	xx -	\$466	\$508	\$581
PRIVACY-FRM -	xx -	20 x 42 -	xx -	\$469	\$512	\$716
PRIVACY-FRM -	xx -	20 x 48 -	xx -	\$574	\$627	\$732
PRIVACY-FRM -	xx -	20 x 54 -	xx -	\$611	\$667	\$851
PRIVACY-FRM -	xx -	20 x 60 -	xx -	\$649	\$708	\$869
PRIVACY-FRM -	xx -	20 x 66 -	xx -	\$720	\$786	\$885
PRIVACY-FRM -	xx -	20 x 72 -	xx -	\$749	\$817	\$903
PRIVACY-FRM -	xx -	20 x 78 -	xx -	\$800	\$873	\$1,006
PRIVACY-FRM -	xx -	20 x 84 -	xx -	\$862	\$941	\$1,040
PRIVACY-FRM -	xx -	20 x 90 -	xx -	\$943	\$1,029	\$1,137
PRIVACY-FRM -	xx -	20 x 96 -	xx -	\$958	\$1,046	\$1,147
PRIVACY-FRM -	xx -	24 x 24 -	xx -	\$474	\$517	\$525
PRIVACY-FRM -	xx -	24 x 30 -	xx -	\$491	\$536	\$525
PRIVACY-FRM -	xx -	24 x 36 -	xx -	\$537	\$586	\$600
PRIVACY-FRM -	xx -	24 x 42 -	xx -	\$614	\$671	\$734
PRIVACY-FRM -	xx -	24 x 48 -	xx -	\$681	\$743	\$749
PRIVACY-FRM -	xx -	24 x 54 -	xx -	\$763	\$833	\$865
PRIVACY-FRM -	xx -	24 x 60 -	xx -	\$806	\$880	\$884
PRIVACY-FRM -	xx -	24 x 66 -	xx -	\$853	\$932	\$899
PRIVACY-FRM -	xx -	24 x 72 -	xx -	\$883	\$964	\$920
PRIVACY-FRM -	xx -	24 x 78 -	xx -	\$899	\$981	\$1,049
PRIVACY-FRM -	xx -	24 x 84 -	xx -	\$911	\$994	\$1,078
PRIVACY-FRM -	xx -	24 x 90 -	xx -	\$977	\$1,067	\$1,211
PRIVACY-FRM -	xx -	24 x 96 -	xx -	\$1,018	\$1,111	\$1,217
PRIVACY-FRM -	xx -	28 x 24 -	xx -	\$499	\$545	\$549
PRIVACY-FRM -	xx -	28 x 30 -	xx -	\$507	\$554	\$549
PRIVACY-FRM -	xx -	28 x 36 -	xx -	\$580	\$633	\$635
PRIVACY-FRM -	xx -	28 x 42 -	xx -	\$654	\$714	\$772
PRIVACY-FRM -	xx -	28 x 48 -	xx -	\$701	\$766	\$788
PRIVACY-FRM -	xx -	28 x 54 -	xx -	\$845	\$923	\$904
PRIVACY-FRM -	xx -	28 x 60 -	xx -	\$893	\$975	\$924
PRIVACY-FRM -	xx -	28 x 66 -	xx -	\$921	\$1,006	\$939
PRIVACY-FRM -	xx -	28 x 72 -	xx -	\$962	\$1,050	\$963
PRIVACY-FRM -	xx -	28 x 78 -	xx -	\$997	\$1,089	\$1,122
PRIVACY-FRM -	xx -	28 x 84 -	xx -	\$1,018	\$1,111	\$1,146
PRIVACY-FRM -	xx -	28 x 90 -	xx -	\$1,095	\$1,195	\$1,319
PRIVACY-FRM -	xx -	28 x 96 -	xx -	\$1,131	\$1,234	\$1,320

Grade 1 Materials	Code
Blue Decorative Acoustic Panel	01
Navy Decorative Acoustic Panel	02
Cream Decorative Acoustic Panel	03
Silver Decorative Acoustic Panel	04
Gray Decorative Acoustic Panel	05
Ash Decorative Acoustic Panel	06
Clear Acrylic Panel	CL
Grade 2 Materials	Code
Frosted Acrylic Panel	FR
Whiteboard Panel	WB
Grade 3 Materials	Code
Magnetic Whiteboard Panel	MW

Options	Code	List Price
Clamp mounting bracket	CM	\$54
Free standing foot bracket	FT	\$54

### Framed Privacy Panels

- Height options: 16", 20", 24", 28"
- Width options: 24" - 96" (in 6" increments)
- Shell Clamps
  - 2 Shell Clamps: 24" - 48" wide panel
  - 3 Shell Clamps: 54" - 72" wide panel
  - 4 Shell Clamps: 78" - 96" wide panel
- Panel mount options:
  - Direct mount to surface (Standard)
  - Clamp mount bracket [CM] or
  - Free standing foot bracket [FT]



ex. PRIVACY-FRM-CL-16X60  
shown with 3 direct mount to surface brackets



	PANEL TYPE	Panel Color	Size (H x W)	List Price
Ex.	MODESTY-TFL -	21 -	12 x 24 -	\$168
	MODESTY-TFL -	xx -	12 x 24 -	\$168
	MODESTY-TFL -	xx -	12 x 30 -	\$184
	MODESTY-TFL -	xx -	12 x 36 -	\$192
	MODESTY-TFL -	xx -	12 x 42 -	\$201
	MODESTY-TFL -	xx -	12 x 48 -	\$238
	MODESTY-TFL -	xx -	12 x 54 -	\$247
	MODESTY-TFL -	xx -	12 x 60 -	\$253
	MODESTY-TFL -	xx -	12 x 66 -	\$260
	MODESTY-TFL -	xx -	12 x 72 -	\$271
	MODESTY-TFL -	xx -	12 x 78 -	\$319
	MODESTY-TFL -	xx -	12 x 84 -	\$333
	MODESTY-TFL -	xx -	12 x 90 -	\$387
	MODESTY-TFL -	xx -	12 x 96 -	\$396
	MODESTY-TFL -	xx -	16 x 24 -	\$185
	MODESTY-TFL -	xx -	16 x 30 -	\$224
	MODESTY-TFL -	xx -	16 x 36 -	\$235
	MODESTY-TFL -	xx -	16 x 42 -	\$251
	MODESTY-TFL -	xx -	16 x 48 -	\$264
	MODESTY-TFL -	xx -	16 x 54 -	\$280
	MODESTY-TFL -	xx -	16 x 60 -	\$295
	MODESTY-TFL -	xx -	16 x 66 -	\$338
	MODESTY-TFL -	xx -	16 x 72 -	\$354
	MODESTY-TFL -	xx -	16 x 78 -	\$392
	MODESTY-TFL -	xx -	16 x 84 -	\$398
	MODESTY-TFL -	xx -	16 x 90 -	\$450
	MODESTY-TFL -	xx -	16 x 96 -	\$459

	PANEL TYPE	Panel Color	Size (H x W)	List Price
Ex.	MODESTY-DAP -	01 -	12 x 24 -	\$209
	MODESTY-DAP -	xx -	12 x 24 -	\$209
	MODESTY-DAP -	xx -	12 x 30 -	\$219
	MODESTY-DAP -	xx -	12 x 36 -	\$228
	MODESTY-DAP -	xx -	12 x 42 -	\$263
	MODESTY-DAP -	xx -	12 x 48 -	\$395
	MODESTY-DAP -	xx -	12 x 54 -	\$306
	MODESTY-DAP -	xx -	12 x 60 -	\$322
	MODESTY-DAP -	xx -	12 x 66 -	\$357
	MODESTY-DAP -	xx -	12 x 72 -	\$393
	MODESTY-DAP -	xx -	12 x 78 -	\$399
	MODESTY-DAP -	xx -	12 x 84 -	\$413
	MODESTY-DAP -	xx -	12 x 90 -	\$483
	MODESTY-DAP -	xx -	12 x 96 -	\$506
	MODESTY-DAP -	xx -	16 x 24 -	\$251
	MODESTY-DAP -	xx -	16 x 30 -	\$283
	MODESTY-DAP -	xx -	16 x 36 -	\$292
	MODESTY-DAP -	xx -	16 x 42 -	\$297
	MODESTY-DAP -	xx -	16 x 48 -	\$333
	MODESTY-DAP -	xx -	16 x 54 -	\$354
	MODESTY-DAP -	xx -	16 x 60 -	\$374
	MODESTY-DAP -	xx -	16 x 66 -	\$444
	MODESTY-DAP -	xx -	16 x 72 -	\$466
	MODESTY-DAP -	xx -	16 x 78 -	\$479
	MODESTY-DAP -	xx -	16 x 84 -	\$489
	MODESTY-DAP -	xx -	16 x 90 -	\$558
	MODESTY-DAP -	xx -	16 x 96 -	\$569

Laminate color	Code
Kensington Maple	21
Asian Night	26
Designer White	28
North Sea	30
Vapor Standz	33
Walnut Heights	35



## Modesty Panels

- Available in two material types: Thermally Fused Laminate [TFL] and decorative acoustic panels [DAP]
- Height options: 12", 16"
- Width options: 24" - 96" (in 6" increments)
- Panel mount: L-shape brackets  
2 brackets: 24" - 48" wide panel  
3 brackets: 54" - 72" wide panel  
4 brackets: 78" - 96" wide panel

Acoustic Panel color	Code
Blue	01
Navy	02
Cream	03
Silver	04
Gray	05
Ash	06



Shipping charges may apply, see page 8 for freight policy.

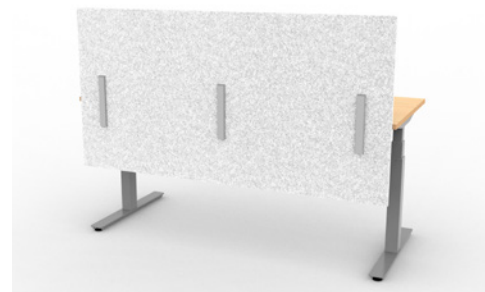
## OPTIONAL ACCESSORY ADD-ONS

	PANEL TYPE	Panel Color	Size (H x W)	List Price
Ex.	MODPRIV-DAP -	01 -	24 x 24 -	\$414
	MODPRIV-DAP -	xx -	24 x 24 -	\$414
	MODPRIV-DAP -	xx -	24 x 30 -	\$414
	MODPRIV-DAP -	xx -	24 x 36 -	\$417
	MODPRIV-DAP -	xx -	24 x 42 -	\$423
	MODPRIV-DAP -	xx -	24 x 48 -	\$435
	MODPRIV-DAP -	xx -	24 x 54 -	\$658
	MODPRIV-DAP -	xx -	24 x 60 -	\$673
	MODPRIV-DAP -	xx -	24 x 66 -	\$674
	MODPRIV-DAP -	xx -	24 x 72 -	\$674
	MODPRIV-DAP -	xx -	24 x 78 -	\$679
	MODPRIV-DAP -	xx -	24 x 84 -	\$684
	MODPRIV-DAP -	xx -	28 x 24 -	\$513
	MODPRIV-DAP -	xx -	28 x 30 -	\$513
	MODPRIV-DAP -	xx -	28 x 36 -	\$517
	MODPRIV-DAP -	xx -	28 x 42 -	\$524
	MODPRIV-DAP -	xx -	28 x 48 -	\$539
	MODPRIV-DAP -	xx -	28 x 54 -	\$816
	MODPRIV-DAP -	xx -	28 x 60 -	\$834
	MODPRIV-DAP -	xx -	28 x 66 -	\$835
	MODPRIV-DAP -	xx -	28 x 72 -	\$835
	MODPRIV-DAP -	xx -	28 x 78 -	\$842
	MODPRIV-DAP -	xx -	28 x 84 -	\$848
	MODPRIV-DAP -	xx -	32 x 24 -	\$594
	MODPRIV-DAP -	xx -	32 x 30 -	\$594
	MODPRIV-DAP -	xx -	32 x 36 -	\$601
	MODPRIV-DAP -	xx -	32 x 42 -	\$610
	MODPRIV-DAP -	xx -	32 x 48 -	\$619
	MODPRIV-DAP -	xx -	32 x 54 -	\$971
	MODPRIV-DAP -	xx -	32 x 60 -	\$993
	MODPRIV-DAP -	xx -	32 x 66 -	\$994
	MODPRIV-DAP -	xx -	32 x 72 -	\$994
	MODPRIV-DAP -	xx -	32 x 78 -	\$1,002
	MODPRIV-DAP -	xx -	32 x 84 -	\$1,009
	MODPRIV-DAP -	xx -	36 x 24 -	\$641
	MODPRIV-DAP -	xx -	36 x 30 -	\$641
	MODPRIV-DAP -	xx -	36 x 36 -	\$649
	MODPRIV-DAP -	xx -	36 x 42 -	\$659
	MODPRIV-DAP -	xx -	36 x 48 -	\$669
	MODPRIV-DAP -	xx -	36 x 54 -	\$1,049
	MODPRIV-DAP -	xx -	36 x 60 -	\$1,072
	MODPRIV-DAP -	xx -	36 x 66 -	\$1,074
	MODPRIV-DAP -	xx -	36 x 72 -	\$1,074
	MODPRIV-DAP -	xx -	36 x 78 -	\$1,082
	MODPRIV-DAP -	xx -	36 x 84 -	\$1,089

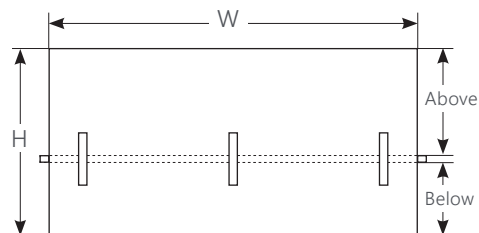
Acoustic Panel Color	Code
Blue	01
Navy	02
Cream	03
Silver	04
Gray	05
Ash	06

### Modesty+Privacy Panels

- Available in decorative acoustic panels [DAP]
- Height options: 24", 28", 32", 36"
- Width options: 24" - 84" (in 6" increments)
- Panel mount: L-shape brackets  
2 brackets: 24" - 48" wide panel  
3 brackets: 54" - 72" wide panel  
4 brackets: 78" - 84" wide panel



Panel Height	Above Surface	Below Surface
24"	12"	10.75"
28"	16"	10.75"
32"	16"	14.75"
36"	20"	14.75"



Shipping charges may apply, see page 8 for freight policy.

# Sit down. Stand up. A healthy way to work.



## Warranty

ergoCentric Seating Systems hereby warrants all of its tables and accessory products against defects and functional failure of materials. These warranties shall not apply to any products which must be replaced because of normal wear and tear, negligence, abuse or accident, shipping damage, or product use other than in accordance with written instructions and warnings. ergoCentric makes no warranty that any of its products are suitable for any particular purpose and makes no other warranties, expressed or implied, other than those set forth herein. In no event shall ergoCentric be liable in either tort or contract for any loss or direct, special, incidental, consequential or exemplary damages. This warranty is based on the use during an eight hour work day.

### Warranty claims

ergoCentric will repair or replace any product or materials, covered by this warranty, found to be defective or inferior within the warranted period. This warranty includes the cost of labor and shipping. Claims are to be made directly to ergoCentric or to the authorized representative from whom the product was purchased. Product or materials, for which a claim has been made, must be made available for inspection by an authorized ergoCentric representative.

### Limit of warranty

These warranties shall be valid only during the term of these warranties; and while the products herein warranted are in the possession of the original purchaser. The original purchaser shall mean the party which first purchased the products for its own use whether from ergoCentric or an authorized ergoCentric representative.

Product	Warranty
upCentric height adjustable Frames	12 years - limited warranty*
High pressure laminate tabletops	12 years
Monitor supports and cable management	5 years
Power & data accessories	3 years

\*12 year warranty covers the frame structure and steel parts. Motors, wires and all electronic components 7 year warranty.  
Federal Government | Workspaces Supply Arrangement | SA #E60PQ-140003/023/PQ

## Sales and service

ergoCentric Seating Systems  
275 Superior Blvd., Mississauga, Ontario L5T 2L6

ph: 1 866 GET ERGO | 905 696-6800  
fx: 1 800 848-5190 | 905 696-0899

[orders@ergocentric.com](mailto:orders@ergocentric.com)  
[ergocentric.com](http://ergocentric.com)

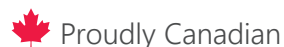
## Sales support

For a current list of our  
sales support staff, please visit:  
[ergocentric.com/rep](http://ergocentric.com/rep)s

## Authorized dealers

For a current list of our  
authorized dealers, please visit:  
[ergocentric.com/government](http://ergocentric.com/government)

# ergoCentric®



ergoCentric® and upCentric™ are registered trademarks of Ergo-Industrial Seating.  
TiMOTION® is a registered trademark of TiMOTION Technology Co. Ltd.  
All other trademarks, registered trademarks and logos are the property of their respective owners.

08/06/2023 v11-SA