

ergoCentric® + zgonic  
The science of sitting™

---

## The new leaders in monitor arms





## About partnership

Zgonic, established in Australia in 2011, leads the realm of monitor arm technology with adaptable and innovative monitor arms. Integrated with unique patented features like a turn dial-stop, custom side panels, and the USB Docking Station, the monitor arms exemplify a blend of productivity enhancement and aesthetic elevation in workstations.

ergoCentric, grounded in the philosophy of The Science of Sitting® since 1990, specializes in creating ergonomic seating and workspace solutions. Our focus is on designing products that promote health and productivity by ensuring proper support and comfort for individuals as they work. With our exclusive patented modular technology, ergoCentric can ensure the workstation adapts to the individual to promote well-being and productivity.

The partnership between Zgonic and ergoCentric brings together two pioneers in their respective fields,

creating a synergy that sets a new benchmark in monitor arms and workstation ergonomics. By integrating Zgonic's state-of-the-art monitor arms with ergoCentric's ergonomic seating, desks, and accessories, we are able to provide a comprehensive ergonomic workstation solution. The unique features of Zgonic's monitor arms, like intuitive movement, easier adjustment, and a cleaner workspace through cable management, complement ergoCentric's commitment to promoting work place well-being and fit for 100% of the workforce.

Together, Zgonic and ergoCentric emerge as leaders in this domain by offering an amalgam of design and functionality that caters to diverse needs, promoting healthier work environments and enhanced productivity. Our collaboration embodies a holistic approach to workstation ergonomics, ensuring that technology and furniture work in harmony to support the user, making ergoCentric a go-to solution for ergonomic monitor arms and workstation solutions in North America.

## Infinite adjustability



Pivot

Tilt



Portrait / Landscape Swivel

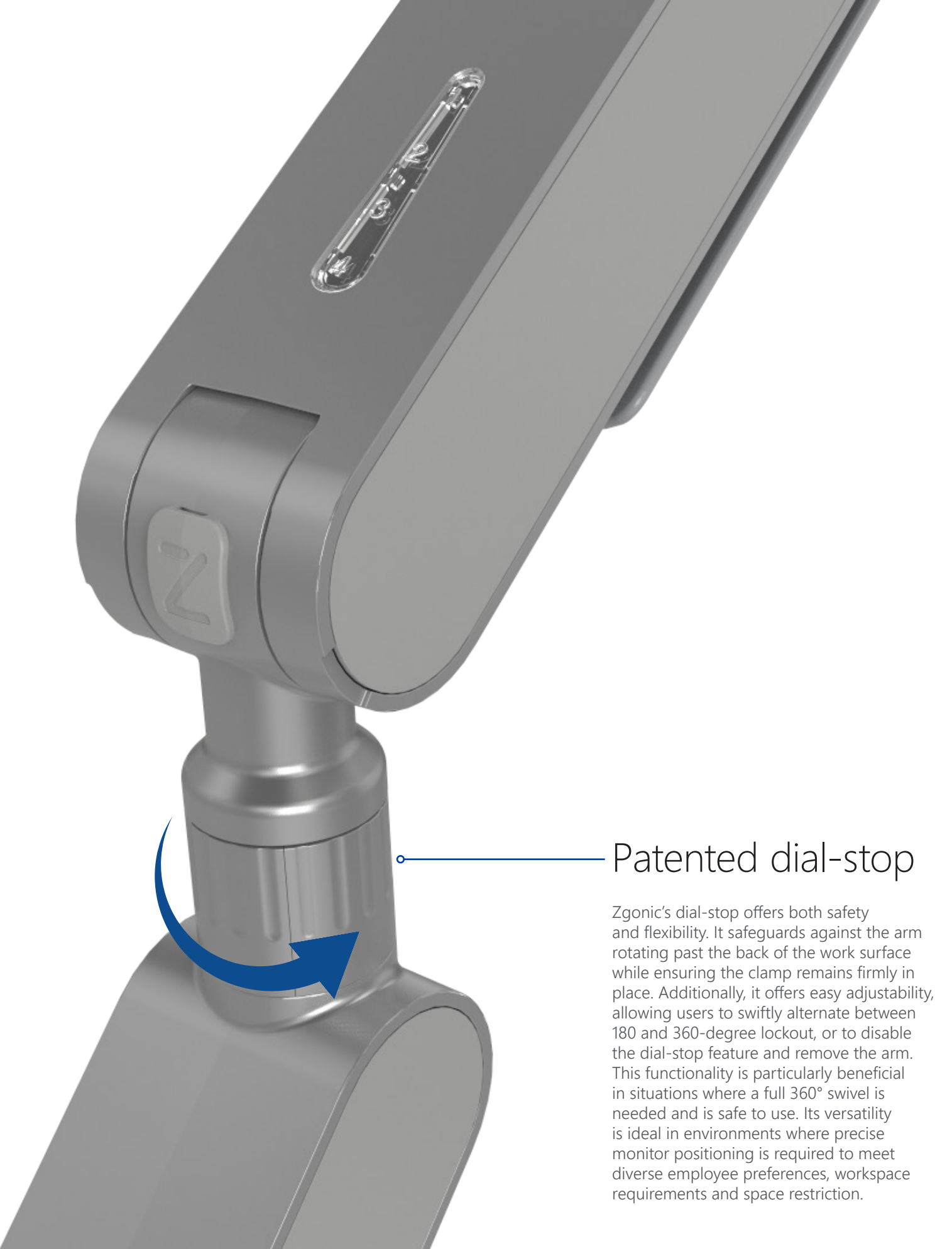
Height Adjustability

Depth Adjustability

Positioning the monitor where users are more comfortable and where the head, neck and back are in proper alignment while computing is critical to the long-term health and well-being of employees today. Zgonic's three-dimensional adjustability, including 12" of height adjustment and up to 27" of depth adjustment (reach), allows employees to position their monitors where they are most comfortable regardless of their height, eyesight or personal preference.







## Patented dial-stop

Zgonic's dial-stop offers both safety and flexibility. It safeguards against the arm rotating past the back of the work surface while ensuring the clamp remains firmly in place. Additionally, it offers easy adjustability, allowing users to swiftly alternate between 180 and 360-degree lockout, or to disable the dial-stop feature and remove the arm. This functionality is particularly beneficial in situations where a full 360° swivel is needed and is safe to use. Its versatility is ideal in environments where precise monitor positioning is required to meet diverse employee preferences, workspace requirements and space restriction.



A simple turn of the lock-out feature protects walls and privacy panels.



## Click & turn tool-free arm installation

The dial-stop allows for the shaft of any arm component to be inserted into a receptacle of another Dial-Stop component. With a simple turn of the dial, the components are locked together.



# Infinite design capabilities



## Patented magnetic side panels

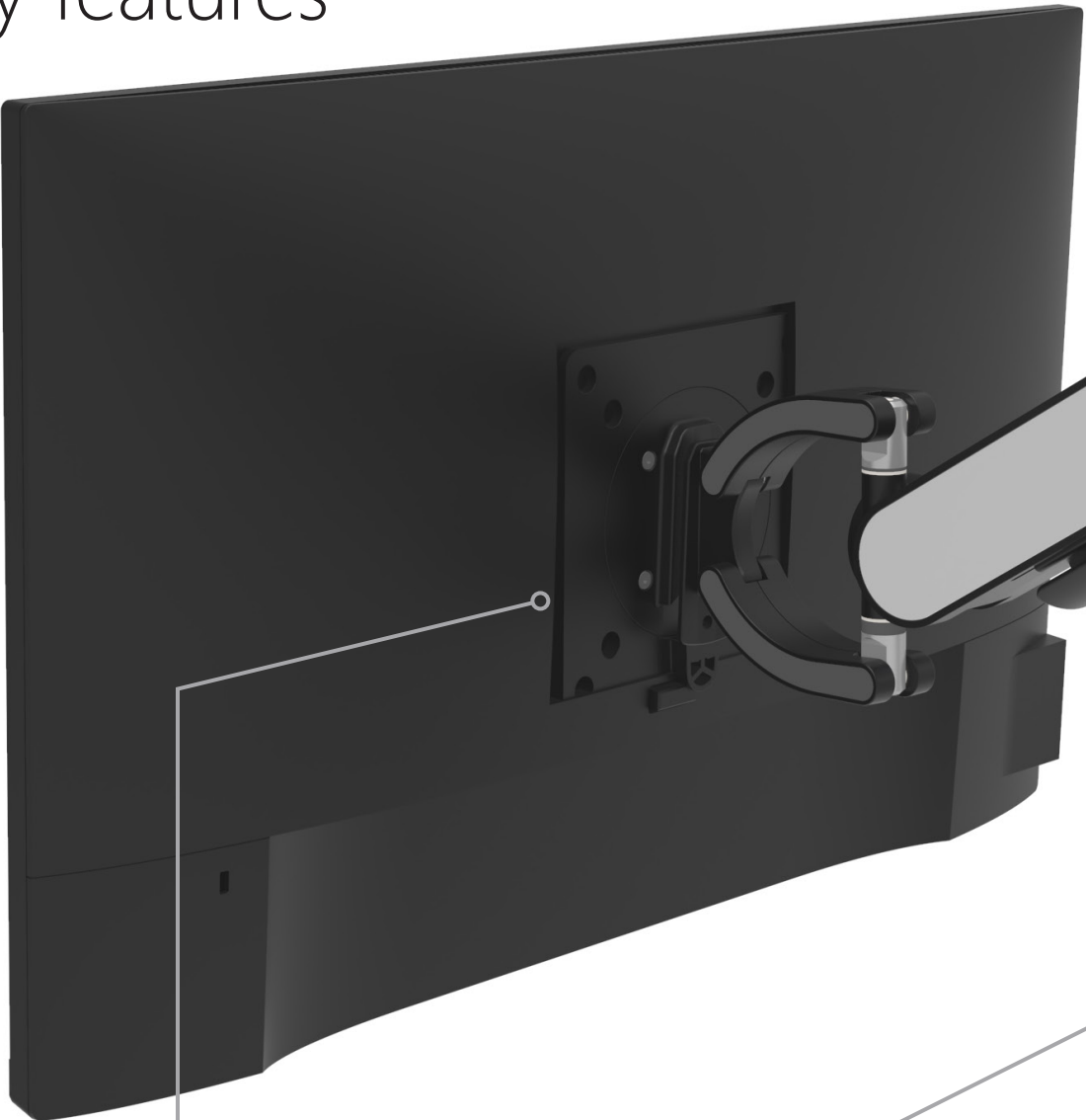
Customized side panels are replaceable and changeable, so you can modify the arm's appearance or compliment the workstation's design.

These versatile panels can be used to display essential information like workstation identification numbers, contact information or websites, in a dynamic and practical way while maintaining a streamlined and professional workspace.





# Key features



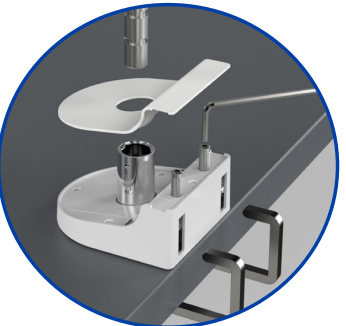
## Monitor weight gauge

Determining the correct monitor weight load is extremely easy with the built in gauge on each arm. This feature prevents the need for expensive adjustments post-installation



## Patented dial-stop

This exclusive feature is the only solution that allows a user to customize the rotation of the arm at any time after installation. Users gain workstation flexibility while also protecting equipment and providing safety to personnel by preventing overhang into aisle-ways.



## Top down clamp

Integrated handle system provides a one-hand, natural, and intuitive motion that doesn't require significant force or complex maneuvers to install.



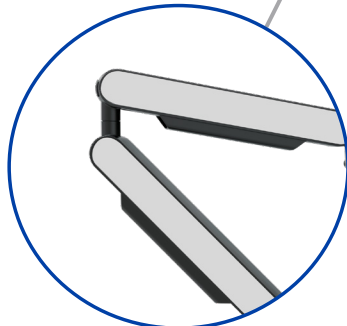
## Quick release VESA plate

Designed for effortless installation, simply attach the VESA plate to the back of a compatible monitor, then slide into place on a Zgonic arm.



## Integrated cable management

Conceal and protect cables with ease on your desktop by routing them through a discreet channel, eliminating visual distractions.



## Patented infinite panel design

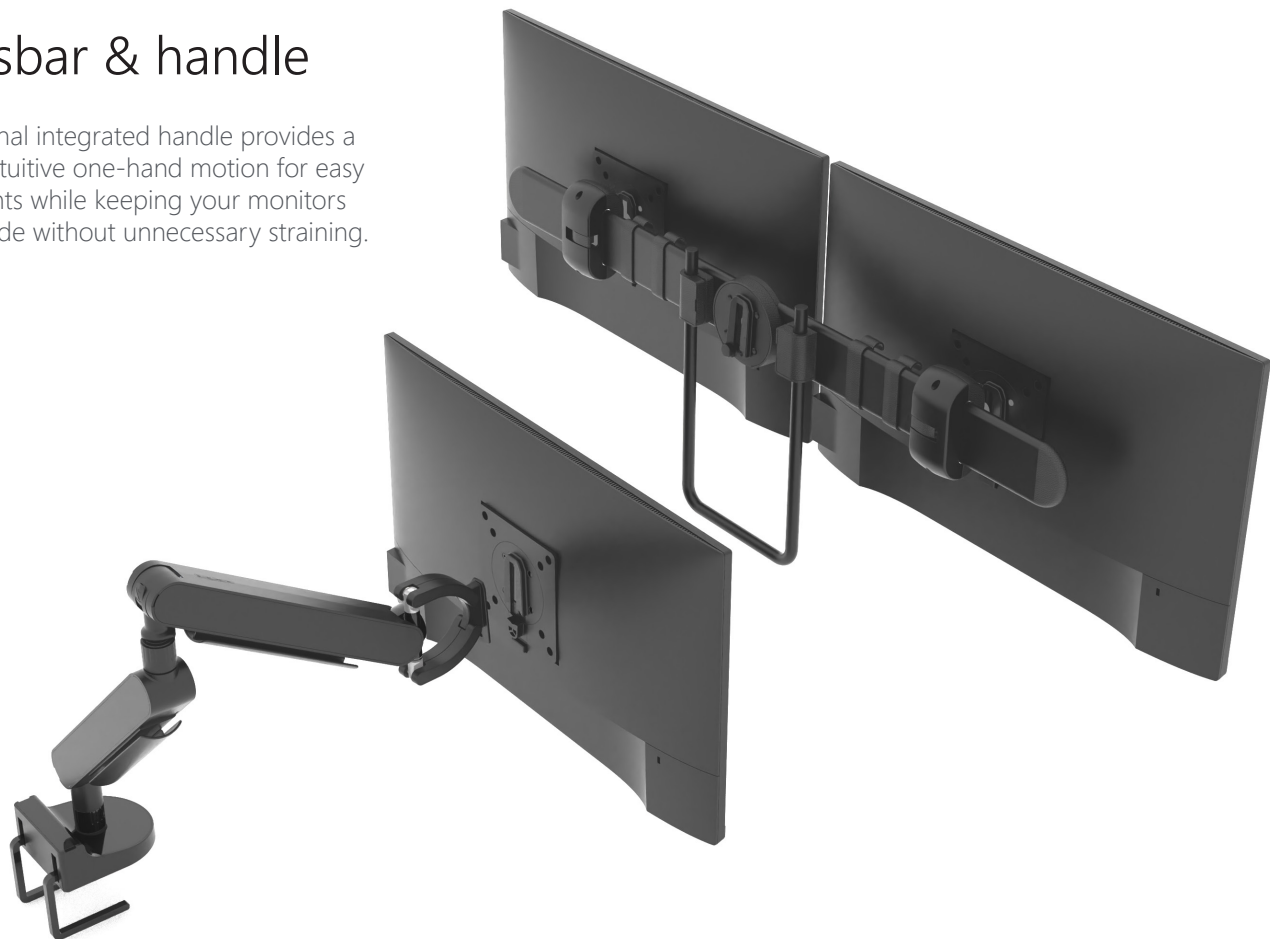
The innovative customizable side panels allow you to match any colour, fabric, or design to the sides of the arm.

# ZG modularity

Designed for single and dual monitor arm configurations in order to achieve the ideal posture for a healthy and efficient workspace.

## Crossbar & handle

The optional integrated handle provides a natural, intuitive one-hand motion for easy adjustments while keeping your monitors side-by-side without unnecessary straining.



## Working posture

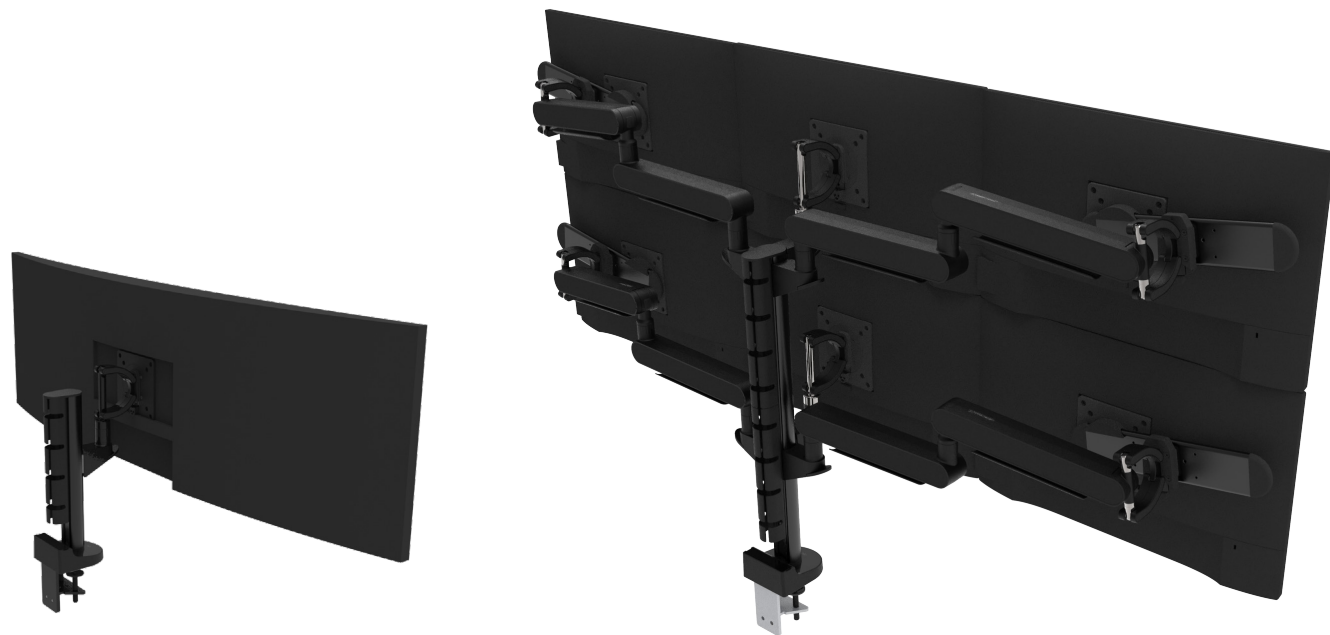
Aligning a well positioned monitor arm system with the visual needs of the user ensures the perfect balance is achieved between posture and workspace efficiency.

# ZPX modularity

A robust multi monitor post support system that holds up-to six monitors above the surface to maintain maximum workspace and optimal ergonomic posture.

## Post system

Easily accommodates multiple monitors, up to two rows of three monitors. The tool-free brackets slide up down the post, and locked for ideal monitor placement.



## Employee performance

Consider the importance of monitor arms in both standing and sitting situations – they directly affect how we position our bodies. When we position our monitors correctly, we’re ensuring good posture and comfort, which in turn allows us to perform at our best.



# Zdock



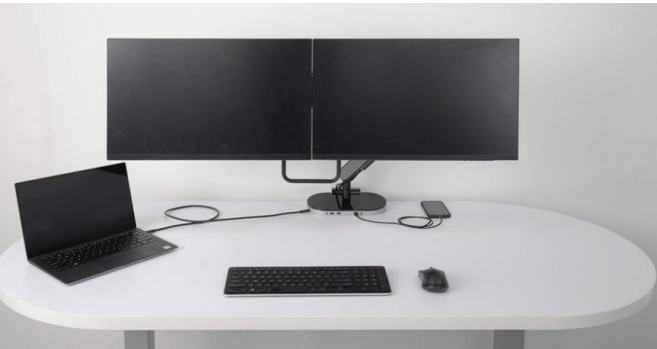
# Zdock

## Eliminates cable clutter and increases usable workspace

Desktops free of cable clutter provide a healthier environment that promotes productivity and efficiency.

All your power and connectivity needs with one simple cable to connect to your laptop. Perfect for permanent or shared workstations.

With Zdock:



Without Zdock:

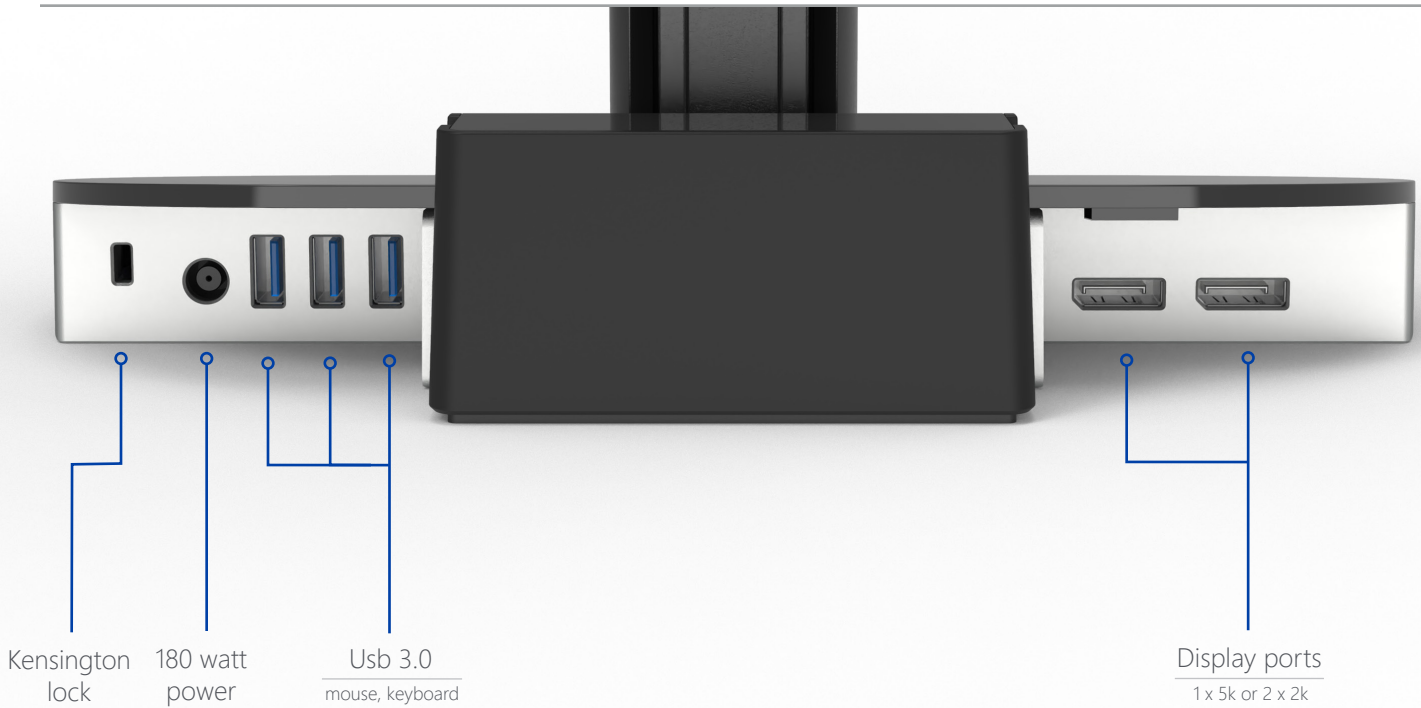
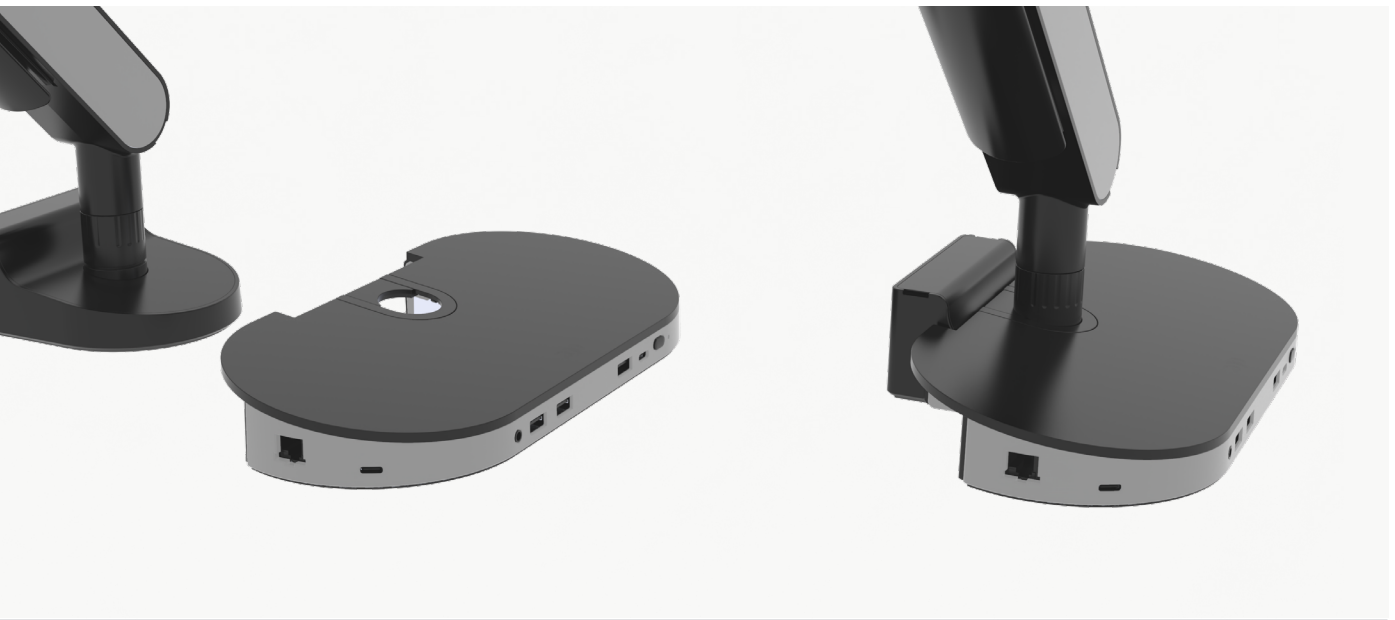


## Available in three colours as a standalone dock:



## Tool free install

Simply slide onto the base of a Zgonic monitor arm.  
Easily retrofits at any time



# Scalability and modularity

## ZG series

ZG arm’s movement enables users to easily collaborate with others by showing them the data on their monitor or the monitor can be moved out of the way when not in use or when the surface is needed for other things, such as laying out a blueprint.

## A scalable solution

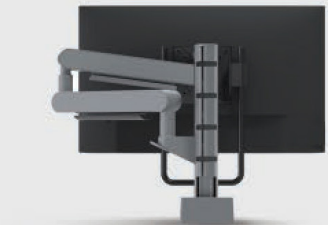
Upgrade your work space by switching your ZG1 to a ZGX. Our quick release VESA Mounts allow users to change their setup quicker than ever.

## Modular design

Zgonic monitor arms feature tool-free, modular installation, making it effortless to interchange components as workstation needs change.



ZP1



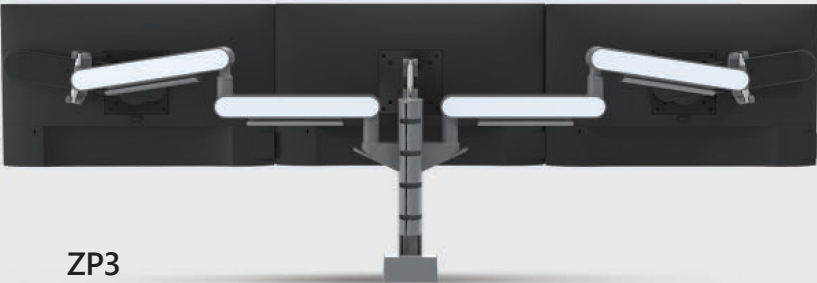
ZP2



ZP4



ZP3



ZP6



# Scalability and modularity

## ZPX post system

The unique features of Zgonic Monitor Arms are now available in a Post System that mounts Individual arms from above the surface, which saves additional desk space over surface mounted arms.

## A scalable solution

Easily installs and upgrades by adding additional monitors without disturbing the original setup – from 1 to 6 monitors.

## Modular design

ZPX makes reconfiguring simple, which reduces future installation costs. Unlike other systems, the individual arm mounts (shoulders) easily slide up/down the post to update your configuration tool-free at any time.



## Popular monitor setups



### ZG1

#### Single monitor arm

Optimize your single monitor setup with the ZG1 Single Monitor Arm. It replaces the often static and non-adjustable original base, elevating and extending the monitor for better posture and easy access to the desk space for writing and referencing documents.



## Popular monitor setups *continued*



### ZG2

#### Dual monitor arm

Enhance dual monitor workstations with the ZG2 Dual Monitor Arm. It lifts both monitors, clearing the desk space directly in front, allowing users to maintain a healthy posture by leaning back and engaging with the backrest.

The arm's flexibility enables perfect alignment of the two monitors or positioning one in portrait mode. This not only promotes well being, but also maximizes workspace efficiency for any two monitor use case.



# ZGX



## Popular monitor setups *continued*



# ZGX

Dual monitor arm

The ZGX monitor arm offers a cost-effective solution for dual monitors on a single arm, featuring a crossbar for effortless alignment. It enables easy adjustment of both screens with a single motion, streamlining the setup process.



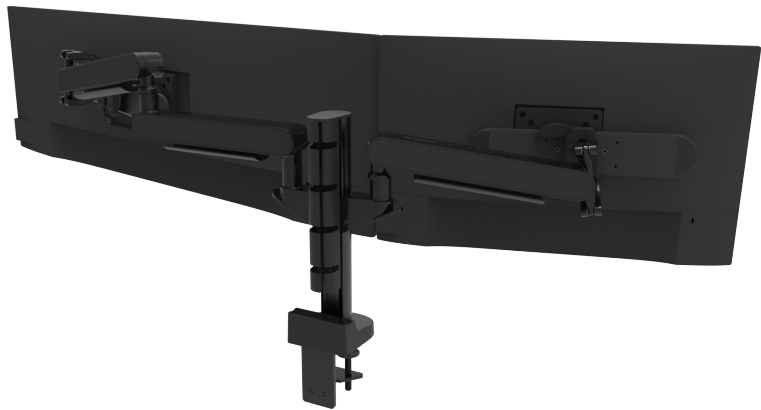




# ZP2

The ZP2 is a Post Mounted Monitor Support System that suspends two monitors above the workspace, saving more room compared to traditional surface-mounted arms. Its post system facilitates easy height adjustment, enhancing ergonomic comfort.

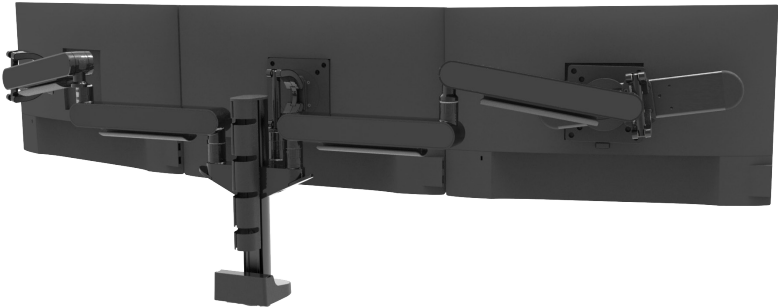
Monitor orientation:



# ZP3

The ZP3 is a Post Mounted Monitor Support System for three monitor setups. This design allows for versatile configurations, such as arranging three screens side by side or two horizontally with a third centered above them, catering to various viewing preferences and requirements.

Monitor orientation:



# ZP4

The ZP4 is a Post Mounted Monitor Support System that adeptly suspends four monitors. It offers flexible layout options, such as a square configuration of four monitors or three in a row with an additional one centered above, accommodating diverse workspace needs and enhancing multi-monitor efficiency.

Monitor orientation:

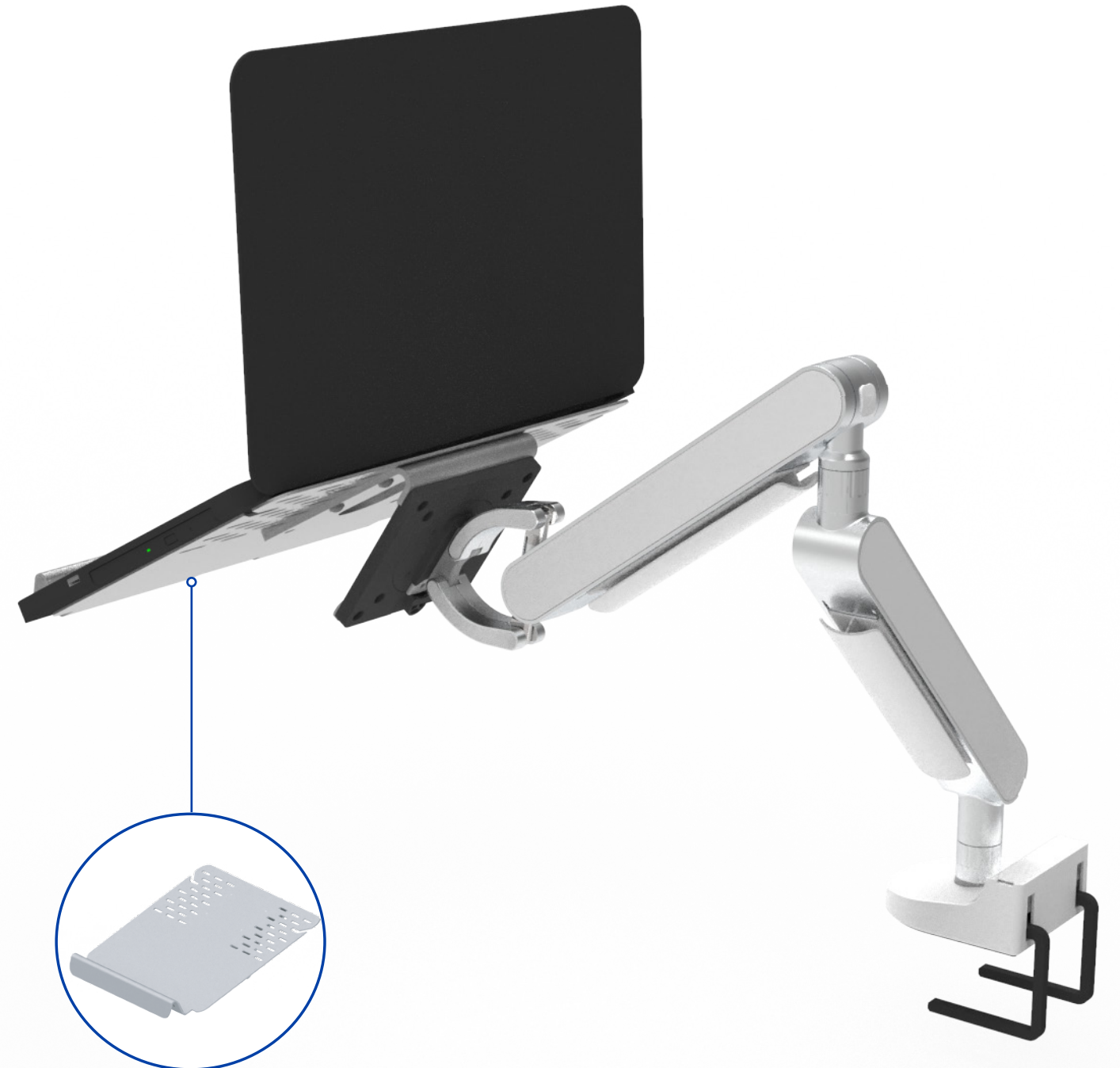


# Accessories



## Laptop tray

Ztray is compatible with all Zgonic monitor arms, supporting any notebook or tablet up to 17 inches. It offers three-dimensional adjustability across your desktop. When paired with an external keyboard and mouse, it allows you to position your device's display in the most comfortable and ergonomically sound location, enhancing your performance while working on your notebook, laptop, or tablet.

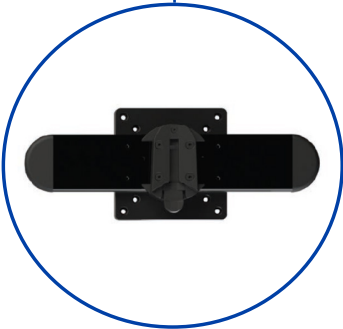
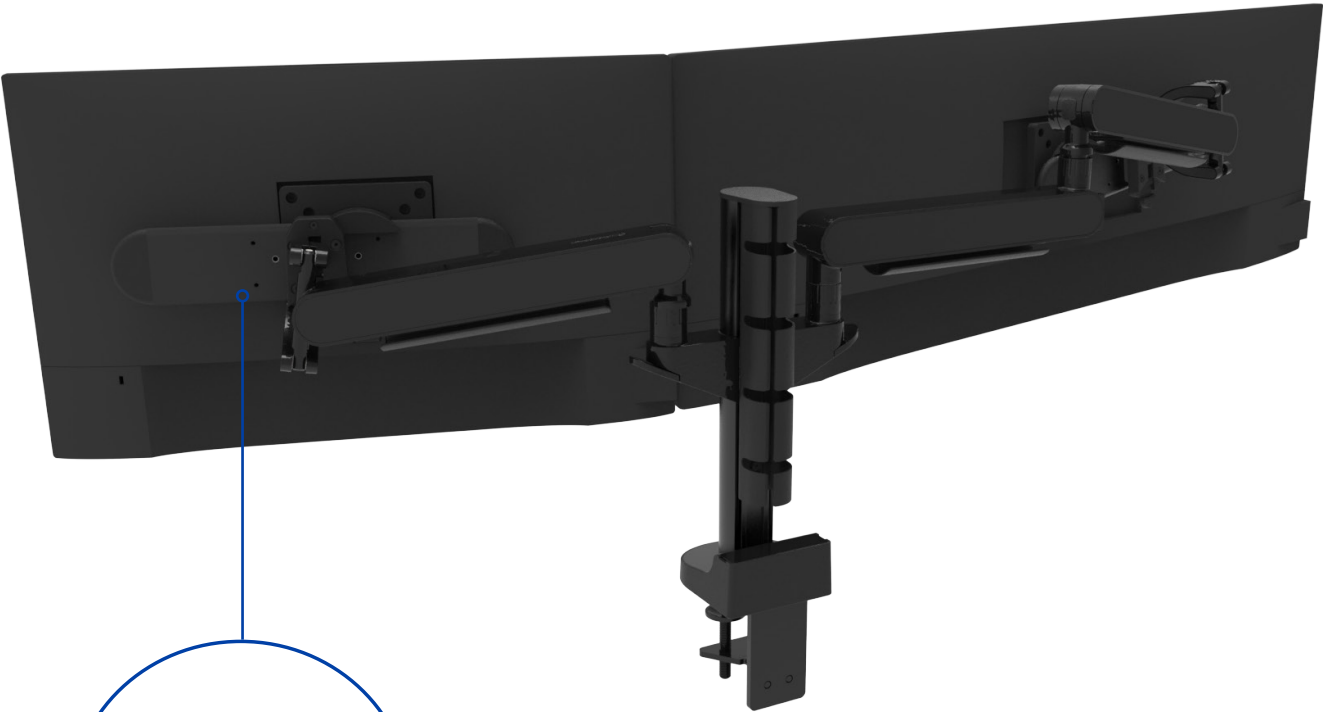




# Slider

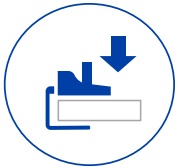
An optional slider can be utilized in cases where the monitors are too wide for the selected arms, or to enable pushing the monitors further back on the desk while maintaining contact in the middle.

Each slider offers up to 9" of extra travel in either direction, providing flexibility for optimal monitor placement.



Slider

# Mount options



Zgonic monitor arms offer versatile mounts: a standard top-down mount for easy above-desk installation, a 2-piece under-desk clamp, a bolt-through option, and a simple desk clamp, ensuring flexible and stable setups.

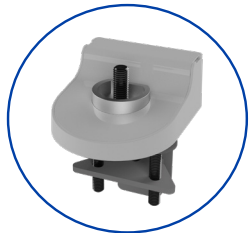
## Top down mount

Our most common/standard mount which allows for installation without going under the desk. Works on desk thickness 0.6" - 2.0"



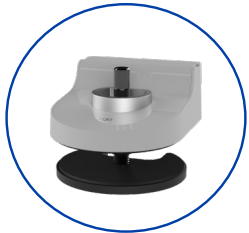
## Other mount options

Choose from a range of different mount options that best fit your workstation.



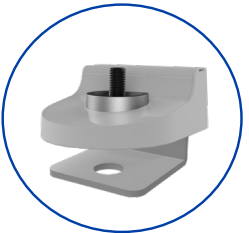
### 2-piece clamp mount

This mount requires going under the desk. Works on desk thickness 0.2"-3.6"



### Bolt-through mount

Used in situations where customer cannot clamp to the edge of the desk. A hole is required in the work surface and works with desk thicknesses from 0.4"-2.5"



### Sliding desk clamp mount

Conveniently mounts from the top of the desk. Available on the ZP system

ergoCentric<sup>®</sup> + zgonic

fx: 1 866 GET ERGO | 905 696-6800

ph: 1 800 848-5190 | 905 696-0899

[orders@ergocentric.com](mailto:orders@ergocentric.com)

[ergocentric.com](http://ergocentric.com)